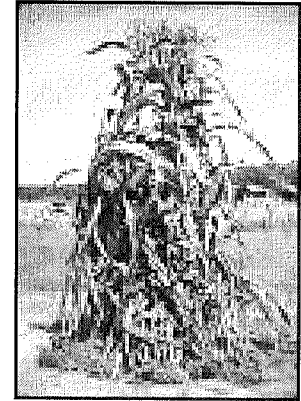


# Conservation Innovation Grant

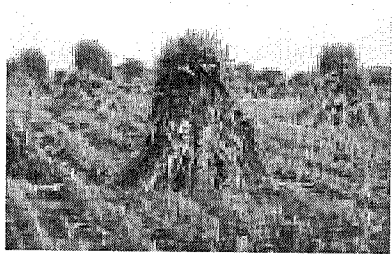


Granted September 2005

# Grant Proposal



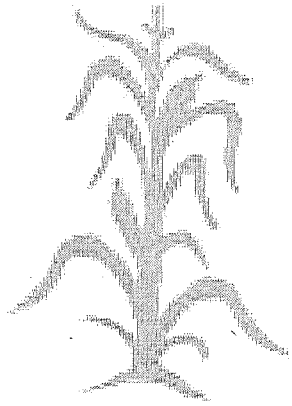
- Purchase no-till corn planter
- To be operated within Chester County
- Built for Plain Sect use
- To coincide with no-till incentive program offered through the Chesapeake Bay Tributary Strategy



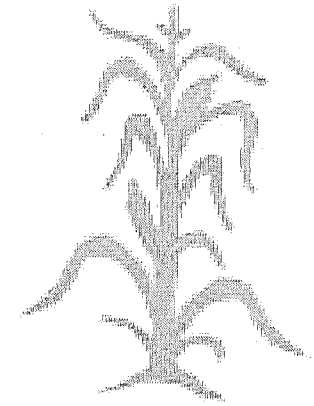
# Acquiring Planter

- Built by Pequea Planters – Gap PA  
(Gideon & Daniel Stoltzfus)
- Outfitted with several options:
  - Front-bar row cleaners
  - Liquid and dry fertilizer capabilities
  - Foam markers
  - Wheel clutches for road travel
- District assumed ownership April 20, 2006





## Interest



- Booked 6 days a week for 3 weeks straight
- Scheduled 3-4 days a week for 4 weeks
- Turned away approximately 6-8 farmers during peak planting season
- Calls as far away as Franklin County – several from Lancaster County

# Actual Usage

(by watershed)

Brandywine		Chesapeake Bay	
• Elam Stoltzfus	32 ac	• Moses King	11 ac
• David Fisher	19 ac	• Emanuel Lapp	12 ac
• Elam Smucker	13 ac	• Enos Stoltzfus	11 ac
• David Riehl	10 ac	• Christ King	50 ac
• Ben King	7 ac	• Henry Fisher	40 ac
• Joseph Allgyer	3 ac	• <u>Amos Smucker</u>	<u>15 ac</u>
• Henry Stoltzfus	16 ac	Total	139 ac
• <u>Aaron King</u>	<u>35 ac</u>		
Total	135 ac		

Grand Total = 274 acres



