

Precision Conservation Using Multiple Cellulosic Feedstocks

**NRCS 69-3A75-7-117
Final Report**

September 1, 2007 - September 24, 2011



College of Agriculture and Biological Sciences
South Dakota Ag Experiment Station
South Dakota State University

Table of Contents

Executive Summary.....	ii
List of Tables	iii
List of Figures.....	iii
Introduction	1
Project Activities.....	2
Project Implementation.....	2
Technology Transfer	4
Funding Received and Expended.....	10
Results.....	11
Site Description and Resources.....	11
Feedstock Production.....	12
Soil Quality,.....	17
Water Dynamics.....	23
Economic Feasibility	26
Potential for Transferability of Results.....	30
Conclusions.....	30
Acknowledgements	32
Appendix A.....	33
Appendix B.....	38
Appendix C.....	43

Executive Summary

The concept for this project was an outgrowth of a producer focus group meeting (9 January 2007) cosponsored by SDSU and SD Corn Growers Association. Participants identified concerns about sustainability of corn stover harvesting and the need for new approaches to meet the future demands of the bioenergy industry. The project was designed to demonstrate and evaluate precision conservation practices that integrate and compliment biomass production for cellulosic ethanol production from multiple feedstocks. Precision conservation applies conservation practices to local field zones to optimize protection of natural resources, sustain soil productivity, and protect ecological goods and services within the landscape. This project evaluated precision conservation practices on producer fields on typical landscapes found in Eastern South Dakota that are most likely to be involved in intensive biofuels production. Management practices involving multiple cellulosic feedstocks were evaluated at four sites located in MLRAs 102A , 102C, 55B, and 55C. Perennial grasses (e.g. switchgrass (*Panicum virgatum*) and prairie cordgrass (*Spartina pectinata*)) were evaluated for productivity and for impacts on soil quality in eroded landscapes. Corn (*Zea mays*) was also evaluated in parallel strips across landscape positions. Multiple symposiums, field tours, and media interviews were used to provide information about multi-cellulosic feedstocks applied to undulating landscapes. Twelve publications and technical guidelines have been generated and published as a result of this project thus far including two online comprehensive publications related to corn and switchgrass production.

This project demonstrated the advantages and disadvantages of growing perennial grasses with corn in landscapes with eroded soils and seasonal wetlands. While the productivity of corn is highest in well-drained upland landscape positions, the productivity of prairie cord grass is highest in wet locations within the landscape. Switchgrass could be ideally grown in landscape positions where past erosion has made it difficult to obtain good stands of corn and where there is significant potential from erosion. Comparisons of cultivated plots with a nearby prairie remnant benchmark showed that soil organic matter, wet aggregate stability, and other measures of soil quality experienced a sharp decline in soil quality since the beginning of cultivation more than 100 years ago. This project demonstrated that perennial grasses can slowly improve soil over time. In a relatively short period of time perennial grasses improved wet aggregate stability, often used as an early indicator of management impacts on soil quality. Perennial grasses such as switchgrass and mixed grasses-forbs dominated by big blue stem (*Andropogon gerardii*) were found to have less variability in production than corn grain across landscape positions. The results support the concept that perennial grass could provide a compatible feedstock with corn in areas where row crops have the most vulnerability to stress and erosion hazard. Implementation of this strategy requires a transition period of one to two years and this must be included in the planning process by the bioenergy industry, producers, and policymakers. The successful application of this strategy presumes an active and vibrant bioenergy feedstock market and a change in thinking about field orientation and logistics.

List of Tables

Table		Page
1	Project Expenses	10
2	Biomass yields from 2011	12
3	Biomass yields from 2010	13
4	Effect of landscape position on prairie cordgrass biomass production	16
5	Effects of year, wetland, and plant spacing on prairie cordgrass production	17
6	Effect of transplant and seeding methods on prairie cordgrass production	17
7	Colman site comparisons of SOM ,POM, WAS, FDA by year	21
8	Flandreau site comparisons of SOM ,POM, WAS, FDA by year	21
9	Water use of corn by month, Flandreau	25
10	Water use of switchgrass by month, Flandreau	25
11	Crop / grass yield, direct cost, total costs, 2008 - 2010	28
12	Gross return and return to management and labor 2008-2010	29
13	Gross return and return to management & labor for grass hay production	29

List of Figures

Figure		Page
1	Map of MLRAs in South Dakota	2
2	Harvesting corn stover for residue treatments	3
3	Dr. Kevin Kephart, VP for Research SDSU commenting at 2009 field tour	6
4	Dr. Carter Johnson discussing switchgrass management at 2010 field tour	6
5	Dr. Gregg Carlson presenting information about biofuels at 2010 field tour	7
6	Progression of perennial grass biomass yields over time	13
7	Corn grain yields by landscape position	14
8	Illustration of the effects of spring flooding on corn development	15
9	Residue removal treatment immediately after planting	15
10	Map of the CIG Colman demonstration site showing eroded zones	18
11	Particulate organic matter fractions for prairie remnant benchmark	19
12	Management effects on aggregate wettability	19
13	Wet aggregate stability for prairie remnant compared to cropland	20
14	Effect of crop on macropore development	22
15	Volumetric water content in corn plots, Flandreau, 2010	23
16	Volumetric water content in switchgrass plots, Flandreau, 2010	23
17	Effect of residue removal on volumetric water content, Flandreau 2010	24
18	Water table depth at Flandreau, 2011	25

Introduction

Biofuel processing plants will initially use corn stover and cobs as the cellulosic feedstock of choice. Over time other sources of cellulose will be used to develop drop-in fuels supplementing traditional fuels such as gasoline and diesel. Perennial grasses are promising future bioenergy feedstocks that could be used in the Northern Great Plains and the Upper Midwest with an added advantage of improving soil and water resources. Precision conservation applies conservation practices to fit the unique environmental and production challenges of local sites rather than relying on a one size fits all approach to conservation. Terrain characteristics in Eastern South Dakota change often over short distances. In this region it is not unusual to have wet lands and eroded soils in the same field along with highly productive farmland. Precision conservation provides an approach that can be used to optimize protection of natural resources, sustain soil productivity, and protect ecological goods and services within the landscape.

The goal of this project was to demonstrate and evaluate site-specific conservation practices that integrate production of multiple sources of cellulosic bioenergy feedstock with natural resource conservation. Specific objectives of the project were to: 1) apply precision conservation practices by using biomass crops (annual and perennial) that are chosen for their adaptation to, and conserving impacts on contrasting soil environments occurring in the farm unit; 2) demonstrate, evaluate, and develop soil management practices that include site-specific corn stover removal rates and management practices to protect the landscape from erosion and sedimentation, promote soil quality, and maintain a positive carbon balance; 3) develop site specific technical guidelines that can be incorporated into technical standards, fact sheets, and handbooks for NRCS personnel, extension educators, crop and environmental consultants, and producers.

This project demonstrated how a producer could incorporate a combination of crops (annual and perennial) for combined biofuel and feed production. Corn stover and switchgrass were grown together in alternating strips in four MLRAs (102A, 102C, 55B, and 55C) in Eastern South Dakota. These sites were used to gather information on the feasibility of growing annual and perennial crops concurrently within fields to maximize environmental and agronomic potential. Our project demonstrated advantages and challenges of using multiple feedstocks in an eroded landscape. These experiences and insights were shared with others through field tours and development of production guidelines for both corn and switchgrass. Additional feedstocks were used at our central demonstration site near Colman SD. These included mixed grass-forb plantings dominated by big blue stem, and prairie cordgrass for use in frequently flooded parts of the landscape. Biomass production and soil quality measurements were taken across three parts of an eroded landscape (summit, backslope, and footslope) in replicated strips. Residue removal treatments were included as part of the study to evaluate the immediate impacts of corn stover removal and grass harvest for biofuel production. A prairie remnant within two miles of the Colman SD site provided a benchmark comparison with long term cultivated land and for use in evaluating the potential for recovery of soil quality through perennial grass plantings on degraded parts of the landscape.

Project Activities

Project Implementation

Project activities began in the fall of 2007 with visits to potential study sites in MLRAs 55B, 55C, 102B and 102C. Site selections were confirmed in the spring of 2008. Agreements with producer collaborators were made for land use and management at 4 sites (Warner, SD (MLRA 55B), Woonsocket, SD (MLRA 55C), Flandreau, SD (MLRA 102B), and Colman, SD (MLRA 102C) (Figure 1). Each site was surveyed with a survey grade GPS and mapped for topography and past erosion. Plot plans and location maps are given in Appendix A. Corn, switchgrass, and prairie cordgrass were planted at all four sites. Four randomized replications were established with the exception of Colman where six replications were established. At Colman an additional treatment of mixed native prairie grasses and forbs was included in the study. This mix included 90% big bluestem, and five other grasses (switchgrass, indian grass, little bluestem, sideoats grama, and Canadian wild rye). Forbs in the mixture included maximilian sunflower, purple coneflower, prairie coneflower, purple prairie clover, sawtooth sunflower, and Canadian milk vetch. All sites include three landscape positions. Plots were laid out in strips that ran approximately perpendicular to the general contour of the land. Each management strip (main plots) was split into residue removal sub-plots. Baseline measurements of soils were made at all sites and weather stations were established at two primary sites (Flandreau and Colman). A third weather station was later added to the Warner site.

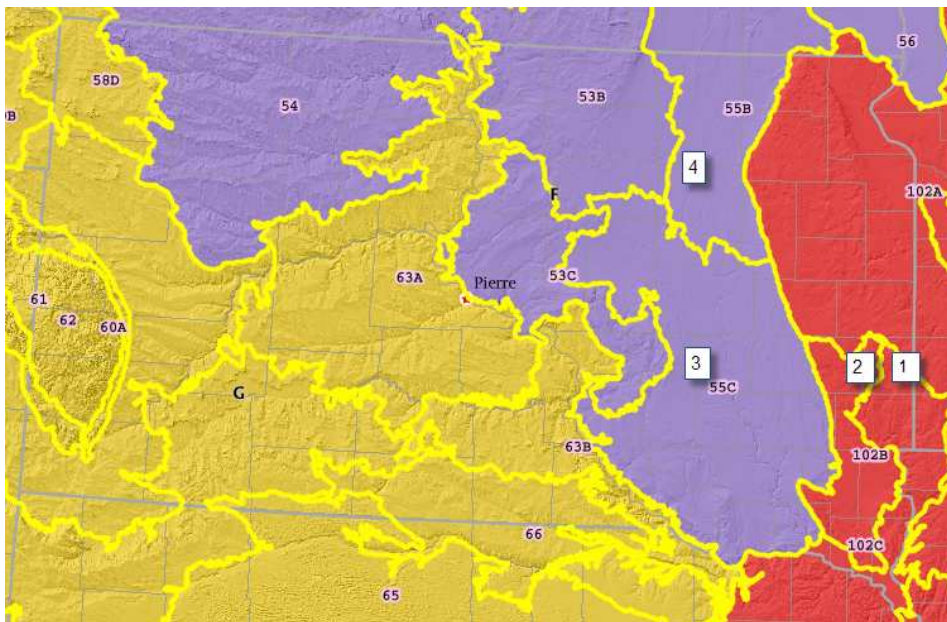


Figure 1. Map of MLRAs in South Dakota showing location of CIG demonstration sites. 1. Flandreau site (MLRA 102C), 2. Colman site (MLRA 102B), 3. Woonsocket site (MLRA 55C), 4. Warner site (MLRA 55B).

Evaluation of the sites included biomass and grain yield measurements, and basic soil quality measurements such as wet aggregate stability. The Colman and Flandreau sites were the subject of more intensive evaluations that included evaluation of soil organic matter and carbon, field water content and ET measurements (Flandreau site), and more detailed soil quality measurements including aggregate wettability, pore size evaluations (tension infiltration) (Flandreau site), particulate organic matter, and microbial hydrolytic activity. Measurement of a prairie remnant benchmark for soil quality and soil organic matter was also made at the Colman site.

Harvest of biomass for yield estimates was conducted using small plot collection procedures on well-defined plot locations by landscape position. However stover removal and perennial grass harvest was conducted across entire treatment strips using commercial scale equipment (Figure 2).



Figure 2. Harvesting corn stover for residue treatments at the Flandreau site.

A biofuel advisory group was established in the fall of 2007 with the first meeting in January 2008. Agronomic educators were included in the advisory committee and served as liaisons between landowner cooperators and University researchers. Educators were also involved in monitoring plots throughout the life of the project. Other members of the advisory group included NRCS personnel, commodity group representatives including CIG grant partner SD Corn Growers Association (<http://www.sdcorn.org>), key administrators, interested producers, and the nonprofit Ecosun Prairie Farms, Inc. (<http://ecosunprairiefarms.org/>). The advisory group considered information and offered input on the CIG project and other biofuel projects that were

related to the CIG project. The purpose of the advisory meetings were to provide information on the progress of projects, provide input on strengths and weaknesses of projects, coordinate activities occurring between research and demonstration projects, and to brainstorm on future activities and research needed in the area of biofuel feedstock production. Due to the time commitment needed for advisory group meetings it was determined that annual rather than semi-annual meetings would be more appropriate. Advisory meetings were held in the first quarter of each year of the project.

After three project years (2007-2010) a 12 month no-cost extension was requested to collect an additional year of data. The first two years of the project were required for grass stand establishment and development. The inclusion of an additional year resulted in two years of biomass production data that reflected the higher yields associated with mature stands of grass and allowed for a more realistic economic projection over the life of a perennial grass stand (>20 years).

Technology Transfer

Symposium events, advisory meetings, and field tours were an integral part of project activities. An annual symposium and field tour highlighted research at our main production sites in 2009, 2010, and 2011. Project concepts and results were also given at local meetings, in press releases, and in media interviews (magazine and radio) during the lifetime of the project.

2009 Symposium

The program for the 2009 symposium and field tour, September 19, 2009 is given in Appendix B. The symposium was titled: "Agriculture for a Changing Environment, A Guided Tour of Selected SDSU Research Sites in Eastern South Dakota". State and Federal government officials, biofuel industry representatives, researchers, producers, SDSU staff and administration, and alternative energy industry representatives participated and attended this symposium and tour. Topics of discussion focused on discussions of carbon and energy enterprise and research in agriculture. The USDA-CIG project was highlighted in the afternoon field tour. Individuals from USDA-NRCS, SD Corn Utilization Council, representatives from the wind and biofuels industry, cooperating producers, SD State Government, Conservation Districts, and collaborating researchers were invited to attend.

There was an exceptional level of audience participation and interaction at this symposium. Presentations given by biofuel industry representatives provided a better understanding of supply chain and efficiency challenges and how results from this and other research could contribute to overcoming these and future challenges. Inclusion of wind energy representatives provided an interesting discussion on how alternative energy producers may cooperate to achieve common goals for energy independence.

The morning symposium was opened by Dr. Don Marshall, acting Dean of the College of Agriculture and Biological Sciences, South Dakota State University. Kelly Nichols (sub. for Jim Nichols) presented an overview of the Midwest Center for Wind Energy, challenges of wind energy production, and a tour of a wind turbine he jointly owns and operates. Mike Roth (POET) presented an overview of the biomass supply chain for ethanol production critical for POET to continue ethanol production. Mr. Roth presented an overview of current on-going research conducted by POET and the direction their company is taking to improve ethanol production efficiency. Brian Stork, CEO of Hanson County Oil Producers (biodiesel producer) presented an overview of the approach their company is taking in efficiently producing biodiesel. Dr. C. Gregg Carlson (SDSU Plant Science) provided an overview of the potential to use stranded electricity to produce nitrogen fertilizer. Dr. Carlson explained that during off-peak periods, electricity produced from wind turbines and hydroelectric plants goes unused, becoming stranded. This electricity could be used to produce hydrogen gas from water instead of natural gas to produce ammonia, the base for all nitrogen fertilizer. Dr. Tagir Gilmanov presented an overview of tower flux measurements of CO₂ exchange, methods and results of research conducted at the SD Opportunities Farm near Lennox SD. An additional tower has been installed and is currently operating at a research site near Bristol SD where CO₂ exchange is being measured in a switchgrass monoculture. Mr. Jeff Hemenway presented an overview of the Conservation Innovation Grants (CIG) and Conservation Stewardship (CSP) programs. Among the items of interest was the ability of producers cooperating in selected types of research to earn additional points used in eligibility ranking for participation in the CSP. There were lively discussions during and after the presentations with participation of nearly all who attended.

Industry, government, and researchers agreed that sustainability and improved productivity are important to success and that precision conservation offers multi-faceted benefits. Attendance numbers (36) were impacted by weather patterns as cool wet conditions transitioned to favorable conditions for field operations at the time of the meeting reducing the number of producers who were able to attend the meeting.

The afternoon consisted of guided tours of the CIG project research sites located near Flandreau and Colman SD. Dr. Tom Schumacher (SDSU Plant Science) acted as the guide which included several speakers. Mr. Brian Scott (SD Dept. of Agriculture) provided an overview of the Feedlot Renovation Project he is involved in during the trip from the Midwest Center for Wind Energy to Flandreau. Overviews of research and demonstration conducted at the Flandreau and Colman sites were presented by Dr. Schumacher with Dr. Todd Trooien (SDSU Ag & Biosystems Engineering) presenting focused information on water use of corn and switchgrass gained from research conducted at the Flandreau CIG site. The tour continued to EcoSun Farms near Colman where Dr. Schumacher (sub. Dr. Carter Johnson) provided an overview of the goals and purpose of EcoSun Farms. Dr. Vance Owens and Dr. Arvid Boe presented information and demonstrated switchgrass and prairie cordgrass production and grass cultivar development respectively for potential biofuel feedstocks.



Figure 3. Dr. Kevin Kephart, Vice President for Research at South Dakota State University, commenting on the prospects for biofuel production at the 2009 CIG project field tour.

2010 Symposium and Tour

On August 16th, 2010 a field tour was held at the Colman site. The tour was attended by 57 individuals representing federal, state, and local government, Congressional Representatives, SD & MN Cooperative Extension Service, and private farming operations. The tour provided examples and information for production alternatives for maintaining productivity and soil quality in extreme conditions. See attached agenda (Appendix C) for more information.



Figure 4. Dr. Carter Johnson discussing switchgrass and mixed grass-forb management to 2010 field tour participants.



Figure 5. Dr. Gregg Carlson presenting information about the ethanol biofuels industry at the 2010 symposium sponsored by the CIG project. Mixed grass-forb bales are in the background.

2011 Field Tours

Two field events were given in 2011 using funds from collaborating projects and conference fees (Ecosun Prairie Farms field day, July 15, 2011 and a field tour as part of the America's Grasslands: Status, Threats and Opportunities Conference held in Sioux Falls, SD, August 15, 2011). The CIG research plots at the Colman SD site were included as part of the tours with presentations highlighting results of the project and illustrating the concept of multicellulosic feedstocks for conservation and production.

Additionally numerous one-on-one and small group tours of the CIG demonstration and research plots were given throughout the growing seasons of 2010 and 2011.

Conference Presentations

Project results were highlighted at several conferences during 2008-2011. This included participation in the CIG showcase at annual SWCS meetings in 2008, 2010, and 2011. A list of presentations made at national conferences is given below.

Eynard, A and Schumacher, T.E. 2011. A rapid, cost-effective, and greener FDA method for soil quality analysis. Soil Carbon Sequestration Conference Abstracts, University of Guam, Mangilao, Guam, August 2011.

Eynard, A , Schumacher, T.E., and Kohl, R.A 2011. Soil Polysaccharide Measurements in the Evaluation of Soil Quality for Multifunctional Agriculture. Soil Carbon Sequestration Conference Abstracts, University of Guam, Mangilao, Guam, August 2011.

Clay., D.E., T. Schumacher, S.A. Clay, and V. Owens. 2009. The agronomic and environmental cost of removing corn stover. Symposium: The environmental and ecological challenges of biomass production. Abstract 2009.51901 American Society Agronomy National Meetings, Pittsburg PA, Nov 1-5, 2009

Heimerl, R.K., Schumacher, T.E., Schumacher, J.A, Johnson, W.C. 2011. Spatial comparison of soil properties between native prairie and restored agricultural land. SWCS Annual Conference Abstracts, Washington D.C., July2011.

Owens, V., C.Hong, S. Osborne, T. Schumacher, and D. Clay. 2010. Environmental Impact of Growing Herbaceous Perennials for Bioenergy Abstract 2010.57726, Agronomy Society National Meetings, Long Beach, CA, Oct.31 - Nov. 3, 2010

Riedell, W.E., S.L. Osborne, T.E. Schumacher, J.L. Pikul Jr. 2010. Native Grassland Management effects on Biomass Production and Soil C Sequestration. Soil and Water Conservation Society 65th International Annual Conference Abstracts, St. Louis, MO, July18-21, 2010

Reitsma, K.D., T.E. Schumacher, D.E. Clay, C.O. Hong, C.G. Carlson, D.D. Malo, T. Trooien, L. Janssen, G. Warman, A. Boe, V.N. Owens, P.O. Johnson, G. Erickson, and I. Graves. Cellulosic Feedstock Productions in Fields of Complex Topography. Annual International Meeting, Soil and Water Conservation Society. St. Louis MO. July 21, 2010.

Schumacher, T.E., Eynard, A, Heimerl, R.K., Reitsma, K.D., Schumacher, J.A, Clay, D.E., Osborne ,S.L., Stetson, S. and Papiernik, S.K. 2011. Management Impacts on Biologically Active Carbon within Eroded Landscapes. Soil Carbon Sequestration Conference Abstracts, University of Guam, Mangilao, Guam, August 2011.

Schumacher, T.E., Skiles, P., Clay, D., Carlson, G., Malo, D.D., Trooien, T, Warman, G., Boe, A., and Owens, V. 2008. Precision Conservation Using Multiple Cellulosic Feedstocks. 2008 SWCS Annual Conference (Tucson, AZ) Abstract Book page 115.

Vahyala, I.E., Schumacher, T.E. and Osborne, S. 2011. Soil Structure Changes In Bioenergy Crop Residue Management Systems. 2011 ASA-CSSA-SSSA Conference Abstracts, San Antonio Texas, October 2011.

Publications

The results of the project were highlighted in a number of extension publications and peer reviewed publications. An MS thesis and a PhD dissertation were based in part on studies conducted on CIG demonstration and research plots.

Carlson, C.G., D.E. Clay, C. Wright, and K.D. Reitsma. 2010. *Ethanol Production can Have a Neutral Impact on Food Production*. ExEx8165. South Dakota State University, South Dakota Cooperative Extension Service Brookings SD.

Clay, D.E., K.D. Reitsma, S.A. Clay (eds.), 2009. "Best Management Practices for Corn Production in South Dakota. EC929". South Dakota State University, SD Cooperative Extension Service. http://pubstorage.sdstate.edu/AgBio_Publications/articles/EC929.pdf *Selected as 2010 Outstanding Agronomic Educational Material (>16 pages). American Society of Agronomy.

Heimerl, R.K. 2011. Comparisons of Soil within a Till Plain across Contrasting Land Uses. MS Thesis. South Dakota State University.

Reitsma, K.D. and D.L. Deneke. 2011. "The Role of Rotation in Cropping Systems Management" in Alternative Practices for Agronomic Nutrient and Pest Management for South Dakota. D.L. Deneke (ed.). pp. 45 -56. South Dakota State University and South Dakota Department of Agriculture.

Reitsma, K.D., R Gelderman, P. Skiles, K. Alverson, J. Hemenway, H.J. Woodard, T.E. Schumacher, D.D. Malo, and D.E. Clay. 2008. Nitrogen Best Management Practices for Corn in South Dakota. FS 941. SDAES. SDSU. Brookings. 57007.

Reitsma, K.D., R. K. Heimerl, and T.E. Schumacher. 2011. Estimating Soil Productivity and Energy Efficiency Using the USDA Websoil Survey, Soil Productivity Index Calculator, and Biofuel Energy Systems Simulator. Pp. 425 – 443, In Clay, D.E. and J. F. Shanahan (eds.) GIS Applications in Agriculture; Nutrient Management for Improved Energy Efficiency. CRC Press, Boca Raton.

Reitsma, K.D., and Malo D.D. 2011. Integration of USDA-NRCS Web Soil Survey and Site Collected Data. Pp. 81 –98, In Clay, D.E. and J. F. Shanahan (eds.) GIS Applications in Agriculture Vol II; Nutrient Management for Improved Energy Efficiency. CRC Press, Boca Raton.

Reitsma, K.D., T.E. Schumacher, V.N. Owens, D.E. Clay, A. Boe, and P.J. Johnson. 2011. "Switchgrass Management and Production in South Dakota" IGrow, South Dakota State University Extension. <http://igrow.org/up/resources/03-2006-2011.pdf>

Reitsma, K.D., T.E. Schumacher, and D.E. Clay. 2011. "Soil Quality" in Alternative Practices for Agronomic Nutrient and Pest Management for South Dakota. D.L. Deneke (ed.). pp. 9 -16. South Dakota State University and South Dakota Department of Agriculture.

Schumacher, J.A., S.K. Papiernik, T.E. Schumacher, and K.D. Reitsma, in-press. Identifying Conservation Hotspots Using Tillage Erosion Modeling. , In Mueller, T.E. and G. Sassenrath (eds.) GIS Applications in Agriculture; Soil Conservation. CRC Press, Boca Raton.

Vahyala, I.E. 2011. Soil Structure Changes in Bioenergy Crop Management Systems. Ph.D. Dissertation, South Dakota State University.

Funding Received and Expended

Funds Received from USDA-NRCS –CIG Award No.: NRCS 69-3A75-7-117: \$493,109

Funds Received for Match from South Dakota State University: \$494,087

Funds Expended:

Table 1. Project Expenses

Category	NRCS 69-3A75-7-117	South Dakota State Univ	Total
Salary & Fringe Benefits	\$294,140	\$347,949	\$642,089
Travel	23,167	0	23,167
Supplies & Contractual	97,028	0	97,028
Tuition Remission/Stipend	4,809	0	4,809
Indirect	73,966	146,138	220,104
Total	\$493,109	\$494,087	\$987,196

Results

Site Descriptions and Resources:

Four unique sites representative of South Dakota were used in the project. The site representing MLRA 55B was located near Warner SD ($98^{\circ} 32' 54''$ W, $45^{\circ} 16' 21''$ N; SW1/4, Section 21, T121N, R64W of 5th principle meridian, Brown County, SD). Approximately 75% of the land in MLRA 55B is used for cropland. Annual precipitation is around 13.5 inches. The principal soils at the demonstration site have natric horizons (soils high in sodium content) that limit productivity. This site was also next to a stream with the lower portions of the plot subject to annual flooding events. (Additional detailed information about the climate, physiography and soils of this site are included in Appendix C).

The site representing MLRA 55C was located close to Woonsocket SD (98.288588° W, 43.922722° N; NW1/4, Section 9, T105N, R62W of 5th principle meridian, Sanborn County, SD). Close to 58% of the land in MLRA 55C is used for cropland. The area is imperfectly drained and has poorly defined drainage ways and wetlands. The region receives about 21.5 inches of precipitation annually. In contrast to the Warner plots the soils at this site are coarser and have low water holding capacities. (Additional information about the resources at this site are given in Appendix C).

More intensive observations were made at the other two sites including MLRA 102B and MLRA 102C. The plots representing MLRA 102B were located near Flandreau, SD ($96^{\circ} 36' 37.77''$ W, $44^{\circ} 4' 47.73''$ N; NE1/4, Section 17, T107N, R48W of 5th principle meridian, Moody County, SD). Seventy one percent of the land in MLRA 102B is used for cropland and receives annually 22 inches of precipitation. The Big Sioux River is less than one half mile from the plot area. The site has rolling land with drainage ways and associated wetlands. The site includes highly productive soils used in crop production as well as soils with wetness and annual flooding issues that result in poor productivity. The plot areas on this site included replications that contained both the poorer and higher productive soils associated with this region. (Additional information about the resources at this site are given in Appendix C).

The MLRA 102C site at Colman SD ($96^{\circ} 50' 37.878''$ W, $44^{\circ} 1' 23.139''$ N; SW1/4, Section 33, T107N, R50W of 5th principle meridian, Moody County, SD) included a mixed grass-forb big blue stem dominated treatment in addition to switchgrass and corn strips. Additionally prairie cordgrass was planted into formerly farmed seasonal wetlands as part of the demonstration. Approximately 74 % of the land area in MLRA 102C is used for cropland. The region is characterized by a large number of small potholes. Annual precipitation is at 22 inches. This site had six replications. Four of the replications included the relative productive Wentworth and Egan upland soils while two replications included the relatively lower producing Dempster and Talmo soils with lower water holding capacities. The lower parts of the landscape

are dominated by poorly drained Worthing and Baltic soils that are often associated with spring flooding and seasonal wetlands. (More information about the resources at this site are found in Appendix C).

Feedstock Production:

Biomass Yields

Based on a combination of locations and years, landscape position affected total biomass only 2 of 14 times. In 2010, the footslope position at Warner was completely flooded due to above average precipitation, and yield of both switchgrass and corn at this position was 0 Mg ha⁻¹, while no difference was noted between the other two landscape positions. The summit had higher yields than either backslope or the footslope at Flandreau in 2010. There was a landscape position X residue treatment interaction in two location-years but the effects were not consistent. At Colman, biomass generally declined with residue removal except at the footslope position, but uneven flooding at the base of the slope was likely the cause. On the other hand, biomass tended to be higher with residue maintenance at Flandreau.

Species had the greatest effect on yield and was significant in 11 of 13 location-year combinations. Approximately 75% (Flandreau, Woonsocket) to 80% (Colman, Warner) of the corn stover was removed from the field after grain harvest. Based on this removal rate, corn stover yields were always greater than warm-season grass mixtures at Colman and greater than switchgrass at all location-year combinations except Colman in 2011 and Flandreau in 2010. Colman was the only location where both switchgrass monocultures and warm-season grass mixtures were compared with each other and with corn. Production of switchgrass and warm-season grass mixtures was similar during the seeding year (2008), but switchgrass yield was higher than grass mixtures each year thereafter. In other work in South Dakota and Minnesota, switchgrass monocultures, or mixtures in which switchgrass comprised one-third or one-half of the seeding mix, were higher yielding than monoculture stands of big bluestem and indiangrass or their two-way mix (Owens unpublished data). Biomass yields for 2011 and 2010 are given in Tables 2 and 3.

Table 2. Biomass yields from 2011. (SU = summit; BS = backslope; FS = footslope)

Location	Corn			Switchgrass			Mixed Grass - Forbes		
	SU	BS	FS	SU	BS	FS	SU	BS	FS
	----Mg ha ⁻¹ ----			----Mg ha ⁻¹ ----			----Mg ha ⁻¹ ----		
Colman	7.0 ab	7.3 a	5.3 ab	5.1 b	7.8 a	6.4 ab	4.3 b	5.8 ab	5.3 ab
Flandreau	NA	NA	NA	7.3 b	8.8 a	7.7 ab	NA	NA	NA

Means within a row with similar letters are not significantly different (Tukey's HSD $P \leq 0.05$)

Table 3. Biomass yields from 2010. In 2010 a landscape by crop interaction was only observed in Flandreau. Crop means for Colman were 7.0 a, 5.8 b, and 3.6 c Mg ha⁻¹ for corn, switchgrass, and mixed-grass forbs, respectively. (SU = summit; BS = backslope; FS = footslope)

	Corn			Switchgrass			Mixed Grass - Forbes		
Location	SU	BS	FS	SU	BS	FS	SU	BS	FS
	----Mg ha ⁻¹ ----			----Mg ha ⁻¹ ----			----Mg ha ⁻¹ ----		
Colman	7.2	7.5	6.2	5.2	6.5	5.6	3.3	4.4	3.1
Flandreau	9.0 a	6.1 ab	3.8 b	5.5 ab	4.8 b	6.4 b	NA	NA	NA
Warner	7.3 a	7.2 a	0	5.4 b	5.4 b	0	NA	NA	NA
Woonsocket	7.3 a	6.2 a	6.3 a	4.3 b	3.5 b	3.4 b	NA	NA	NA

Means within a row with similar letters are not significantly different (Tukey's HSD $P \leq 0.05$)

While corn stover biomass production remained relatively constant across years at each location, biomass from switchgrass and warm-season grass mixtures increased each year after establishment (Fig. 6). In other work, we have seen an increase in production from both monoculture switchgrass and mixtures of native grasses after the establishment year. It is common for these native grasses to take up to three years to fully establish and achieve optimum yield capabilities.

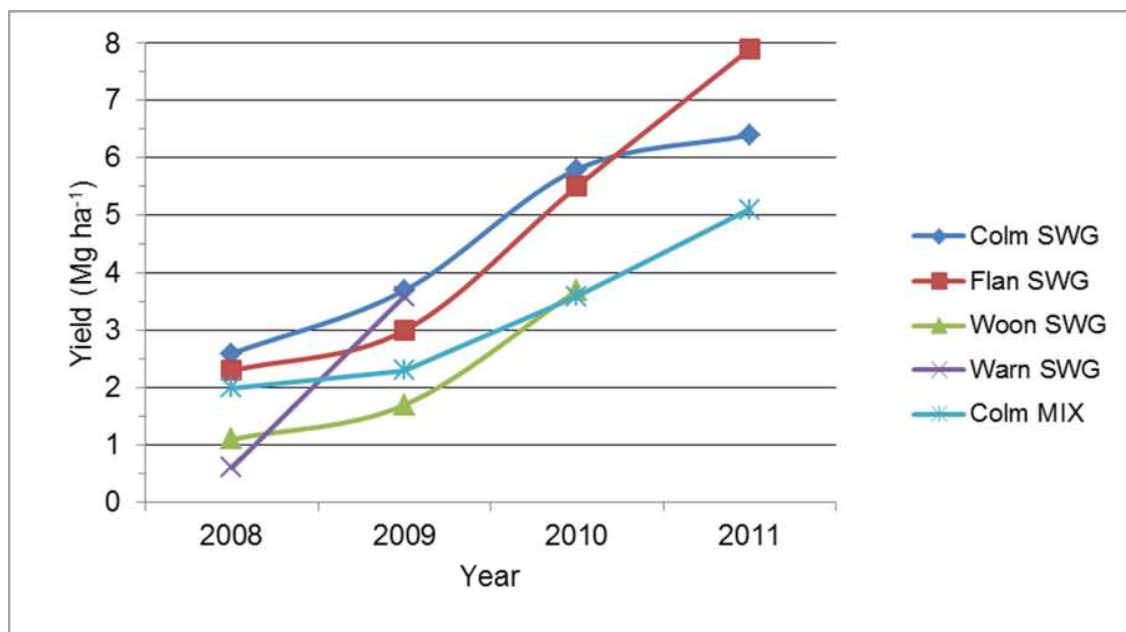


Figure 6. Progression of perennial grass biomass yields over time from the establishment year until the conclusion of the project averaged over landscape positions and residue management treatments. (Colm = Colman site; Flan = Flandreau site; Woon = Woonsocket site; Warn = Warner site).

Corn Grain Yield

In general corn grain yields were more sensitive to landscape position than perennial grass yields. This was in particular observed in the lower landscape positions when temporary flooding or saturated soils conditions occurred in the spring. In these cases there was a distinct landscape position effect. At Colman two of the replications were in particular prone to flooding. Figures 7 and 8 illustrate the impact of temporary spring flooding on corn grain development and subsequent grain yields at the Colman site.

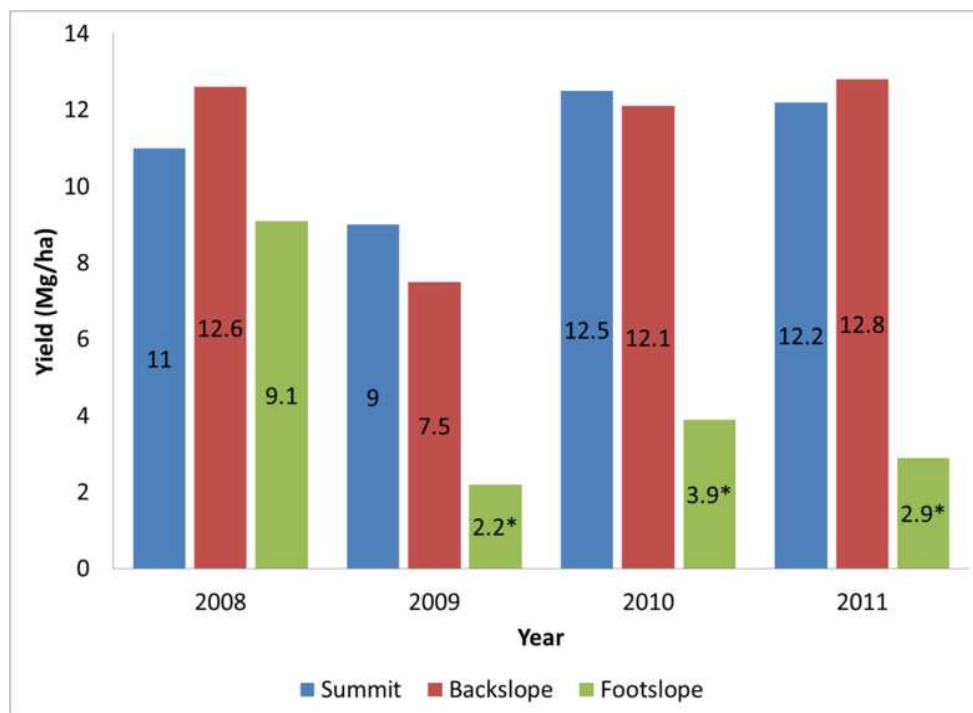


Figure 7. Corn grain yields (15.5% moisture) by landscape position on flooded replications at the Colman site. The asterisk represents a significantly lower yield within a given year (Tukey's HSD $P \leq 0.05$).

Grain yields were not reduced significantly at replications and sites where temporary flooding was not observed although there was a trend to lower yields in the wetter landscape positions at most sites. Generally flooding had a proportionately greater impact on corn grain yield than biomass yields. It should be noted that in most cases the reduced grain yields were not related to lower plant populations if corn emerged. Due to logistics our yield measurements generally excluded the worst case scenarios where corn did not emerge or where planting could not occur because of standing water or saturated soil conditions. There was often a delay in planting the plots due to wetness in the foot/toe slope positions. The impact of this delay is not accounted for in our grain yield measurements.



Figure 8. Illustration of the effects of spring flooding on the foot/toe slope region of the CIG plots for corn development. Corn grain yields were most affected by flooding. Grass biomass yields tended to be more stable across landscape positions.

Residue removal had little to no effect on grain yield. This is not surprising given the relatively short duration of the study. However visual observations of increased weed emergence were noted on treatments where the corn stover was removed. Figure 9 illustrates the appearance of residue removal plots after corn planting in June (removal plot in the center of photo). Also one can easily see where grass was harvested the previous fall.



Figure 9. Residue removal treatment (center) immediately after planting at Colman SD. Far right half of the corn plot is the residue maintained treatment.

Prairie Cordgrass Establishment and Biomass Production

Significant differences were found among landscape positions and between species for biomass production along an environmental gradient near Colman, SD. Biomass production increased from the shoulder to the swale positions (Table 4). Plots containing prairie cordgrass produced more biomass than adjacent plots composed of only switchgrass. However, the density of the stand of prairie cordgrass was highly variable along the gradient and appeared to be unrelated to landscape position. The samples taken for this study were only in those regions where cordgrass had established. The range in the contribution of prairie cordgrass to total biomass in the area which it had been planted, based on a visual assessment, was from 20% to 100%, with a mean of 75%. Biomass data for prairie cordgrass were not collected from the other three locations (i.e., Flandreau, Warner, and Woonsocket) because of heavy mortality in prairie cordgrass due to sensitivity to herbicides used to promote the establishment of switchgrass where the seeded switchgrass plots overlapped with the transects of transplanted prairie cordgrass.

Table 4. Effect of landscape position on prairie cordgrass and switchgrass biomass production along an environmental gradient near Colman, SD in 2011.

Effect	Mg dry matter per hectare
<i>Landscape position</i>	
Shoulder	5.9a†
Backslope	10.1b
Swale	13.0c
<i>Species</i>	
Prairie cordgrass	11.9a
Switchgrass	7.5b

†Means within effects followed by different letter are significantly different by LSD (0.05).

No differences were found between years, between wetlands, or between plant spacing (0.9 vs. 1.5 m spacing) for biomass production of prairie cordgrass in October of 2010 and 2011. Overall, biomass production exceeded 12.5 Mg of dry matter per hectare. This experiment demonstrated that transplanting seedlings in the spring was a highly effective method for establishing prairie cordgrass in cropland depressions that had a long history of conventional tillage and annual row-crop production. It also showed no advantage of the narrow spacing over the wide spacing for biomass production. This was important because stand establishment could be done quicker and with fewer plants using the wider spacing. The ability of prairie cordgrass to spread rapidly in to unoccupied interstitial spaces by rhizomes over a period of two years was evident (Table 5).

Table 5. Effects of year, wetland, and plant spacing on means of biomass production of prairie cordgrass near Colman, SD. Standard errors are given in parentheses.

Effect	Mg dry matter per hectare
<i>Year</i>	
2010	12.0 (0.6)
2011	13.3 (0.7)
<i>Wetland</i>	
#1	12.9 (0.6)
#2	12.4 (0.6)
<i>Spacing</i>	
0.9 m	13.3 (0.6)
1.5 m	12.0 (0.6)
Grand mean	12.7 (0.4)

Other methods for establishing prairie cordgrass in seasonal wetlands/cropland depressions investigated were a wide spacing (3.0-m) transplant method and seeding with a drill designed for establishing grasses in no-till environments. The planting rate for the seeded plots was about 4 kg per hectare and the row spacing was 20 cm.

Table 6. Effect of transplant and seeding methods on the means and standard errors for 2011 prairie cordgrass biomass production.

Establishment method	Mg dry matter per hectare
Wide-spacing transplant in 2009	13.2 (1.0)
Early spring seeding in 2010	14.7 (1.4)
Late fall seeding in 2009	13.0 (0.8)

The wide spacing transplant and seeding methods were highly effective for establishing high biomass yielding monocultures of prairie cordgrass (Table 6). The successful establishment from both spring and fall (i.e., dormant) plantings indicated flexibility for timing of seeding, which is important because of the unpredictability of water levels in seasonal wetlands, particularly in the spring.

Soil Quality:

Benchmark Comparisons

Soil quality measurements were used as an early indicator of management induced changes in soil functioning. Early indicators of changes in soil performance in productivity and ecological functioning include measurements of particulate organic matter, aggregate wettability, and wet aggregate stability. An opportunity for establishing benchmarks for these values existed at the Colman site. A prairie remnant managed by the Nature Conservancy with similar soils and topography compared to the CIG plots was located within 2 km of the demonstration site.

Figure 10 describes the location of samples collected in 2010 for establishment of benchmarks from the CIG plots. A matched location was sampled at the Sioux Prairie site (no history of cultivation).

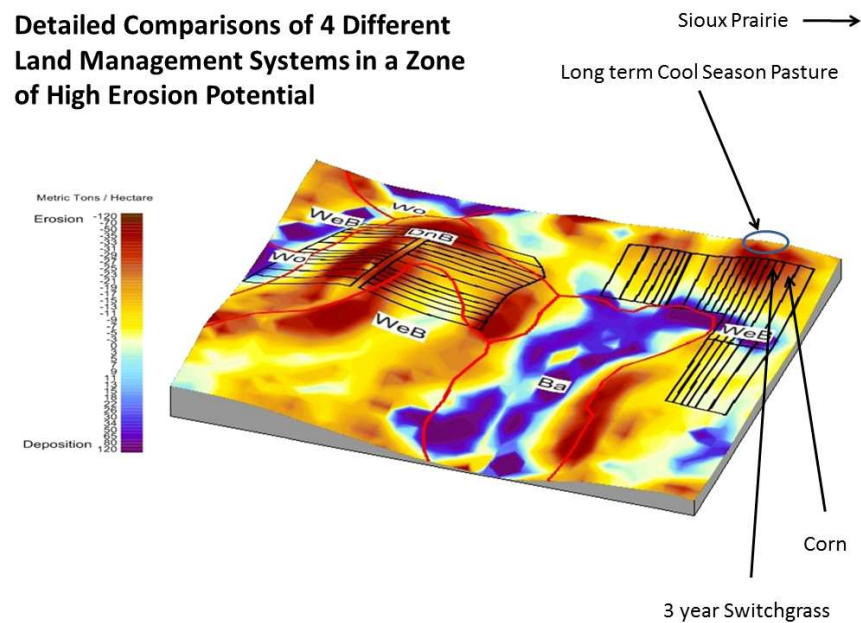


Figure 10. A map of the CIG Colman demonstration site showing severely eroded zones (red areas) and the location of samples collected for benchmark analysis. A site with similar soil and topography was sampled on the Sioux Prairie, a prairie remnant within 2 km of the site.

Particulate and soil organic matter fractions in the top 15 cm were highest in the prairie remnant benchmark (Fig. 11). The comparison with the long term cultivated sites indicated a 50% reduction in organic matter has occurred since cultivation commenced at the site 100-120 years ago. The effect of three years of switchgrass on soil organic matter levels is not yet apparent at the CIG demonstration site.

Aggregate wettability is related to the internal physical structure, chemical makeup, and stability of the aggregate. Wettability is often related to soil organic matter content. The prairie remnant benchmark and the long term pasture both had significantly greater water uptake rates than the long term cultivated sites (Fig. 12). Sometimes wettability is increased under conditions of low aggregate stability so this measure must be interpreted in conjunction with wet aggregate stability measurements.

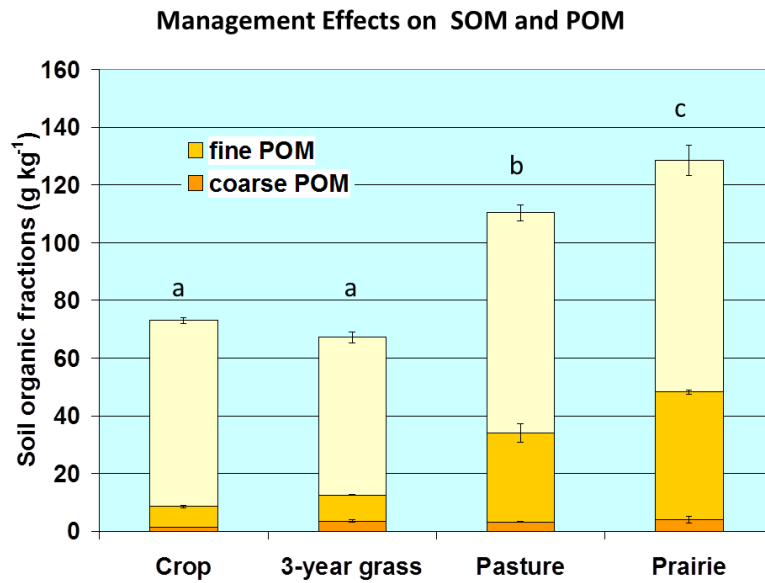


Figure 11. Particulate organic matter fractions of soil organic matter benchmarks for the prairie remnant compared to long term cultivated sites. Sample sites were similar in all aspects except for cropping history. (LSD $P \leq 0.05$)

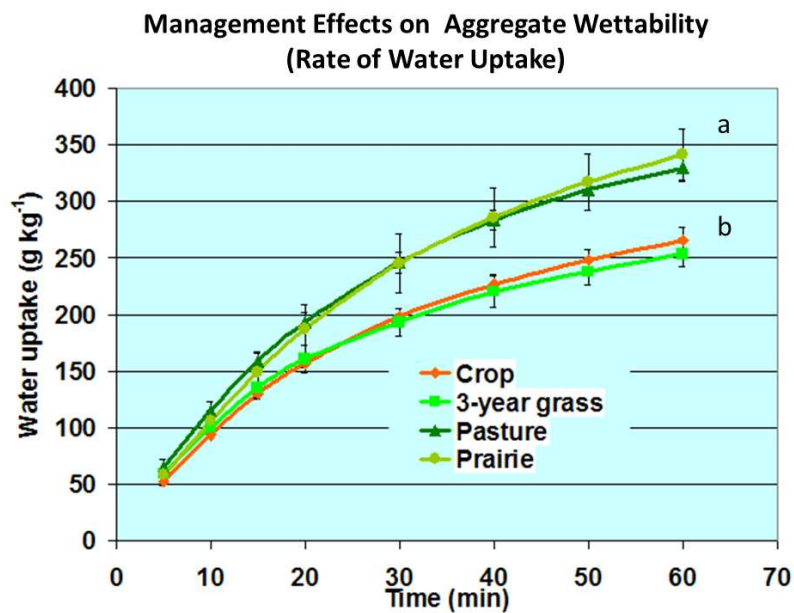


Figure 12. Aggregate wettability benchmarks for the prairie remnant compared to long term cultivated sites. Sample sites were similar in all aspects except for cropping history. (LSD $P \leq 0.05$)

Wet aggregate stability measurements were much higher in the prairie remnant than the cultivated sites (Figure 13). The long term pasture immediately adjacent to the CIG

demonstration plots had similar aggregate stability values. The aggregate stability measurements for the long term annual cropped land were lower by almost three times compared to the prairie remnant and long term pasture. Interestingly, the switchgrass treatment in the CIG plots shows an increase in wet aggregate stability relative to the corn treatment (representing a history of at least 100 years of annual cropping). This indicates that positive effects of growing switchgrass on degraded soils can be observed in a relatively short time period. A relative difference in aggregate stability between management systems is often the first indication that management is improving soil functions.

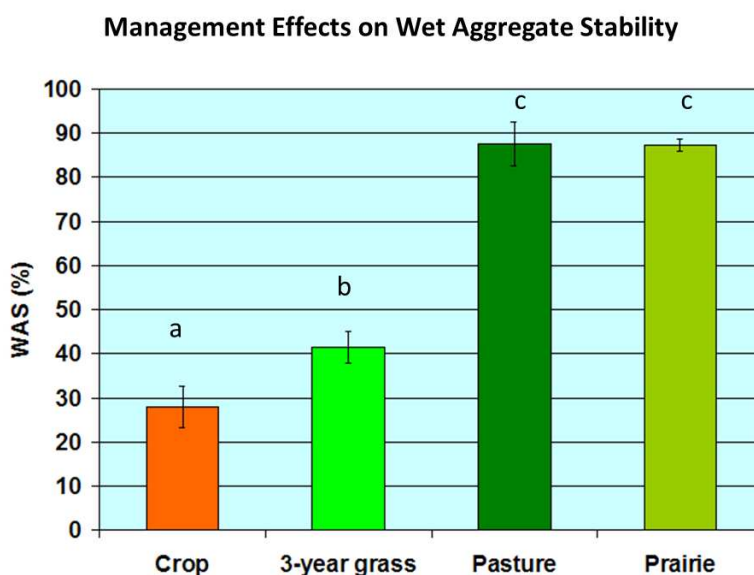


Figure 13. Wet aggregate stability benchmarks for a prairie remnant compared to long term cropped land with a past history of erosion. Sample sites were similar in all aspects except for cropping history. (LSD $P \leq 0.05$)

Soil Quality Comparisons between Treatments

Soil organic matter (SOM) changes are difficult to detect in a short time period of < 5 years due to soil variability and the complex mixture of soil organic compounds making up soil organic matter. An examination of soil organic matter concentrations from the top 15 cm of soil at the Colman and Flandreau sites show no measureable changes in soil organic matter during the period of study between crops (Tables 7,8). There were no crop by landscape position interactions.

Particulate organic matter (POM) represents a fraction of SOM that is > 0.5 mm in size and represents partially decomposed organic matter. As such this fraction represents a relatively young fraction of SOM and is more sensitive to changes in management practices. A larger component of POM is an indication that over time SOM is beginning to build in the soil. At both

the Colman and Flandreau sites the perennial grass treatments had greater amounts of POM than corn in 2009, but this difference disappeared in 2010 (Tables 7,8).

FDA measures the potential for microbial hydrolytic activity as such it is an index of the soil organic matter decomposition process. Often FDA measurements mirror the effects of management on the POM fraction of the soil. This was generally true for the Colman and Flandreau sites (Tables 7,8). Although some of the numeric differences were not always statistically significant.

Table 7. Colman site comparisons of soil organic matter (SOM), particulate organic matter (POM), wet aggregate stability (WAS), and microbial hydrolytic activity as measured by a fluorescein diacetate assay (FDA) averaged across landscape positions and residue treatments. Statistical comparisons are for columns within each year.

	SOM	POM	WAS	FDA
2008	g kg ⁻¹	g kg ⁻¹	%	mg kg ⁻¹ h ⁻¹
Switchgrass	75 a	12 a	51 a	42 a
Mixed Grass	74 a	13 a	47 a	43 a
Corn	76 a	13 a	49 a	44 a
2009				
Switchgrass	81 a	19 a	49 a	85 a
Mixed Grass	80 a	17 ab	49 a	82 a
Corn	81 a	15 b	46 a	75 b
2010				
Switchgrass	73 a	14 a	36 a	47 ab
Mixed Grass	72 a	14 a	37 a	50 a
Corn	73 a	12 a	28 b	43 b

Table 8. Flandreau site comparisons of soil organic matter (SOM), particulate organic matter (POM), wet aggregate stability (WAS), and microbial hydrolytic activity as measured by a fluorescein di-acetate assay (FDA) for crops averaged across landscape positions and residue treatments.. Statistical comparisons are for columns within each year.

	SOM	POM	WAS	FDA
2008	g kg ⁻¹	g kg ⁻¹	%	mg kg ⁻¹ h ⁻¹
Switchgrass	82 a	12 a	46 a	41 a
Corn	81 a	12 a	45 a	35 a
2009				
Switchgrass	85 a	21 a	54 a	79 a
Corn	82 a	16 b	44 b	73 a
2010				
Switchgrass	79 a	16 a	42 a	50 a
Corn	80 a	17 a	30 b	64 a

Wet aggregate stability was increased relative to the corn treatment after 2-3 years at both Colman and Flandreau (Tables 7,8). Wet aggregate stability is frequently one of the most sensitive indicators of management induced changes in soil quality.

Soil Pore Size Characteristics

Soil pore characteristics were measured in-situ at the Flandreau site using a tension infiltrometer. A significantly larger mean equivalent pore radius of 227 μm was measured in corn where biomass was not harvested in comparison to 195 μm when the biomass was removed ($\text{LSD}_{0.05} = 37$) (Figure 14). Biomass harvest did not affect the mean equivalent pore radius in the grass plots. However grass plots had a significantly greater mean equivalent pore radius than both the residue removed and residue retained treatments in the corn plots.

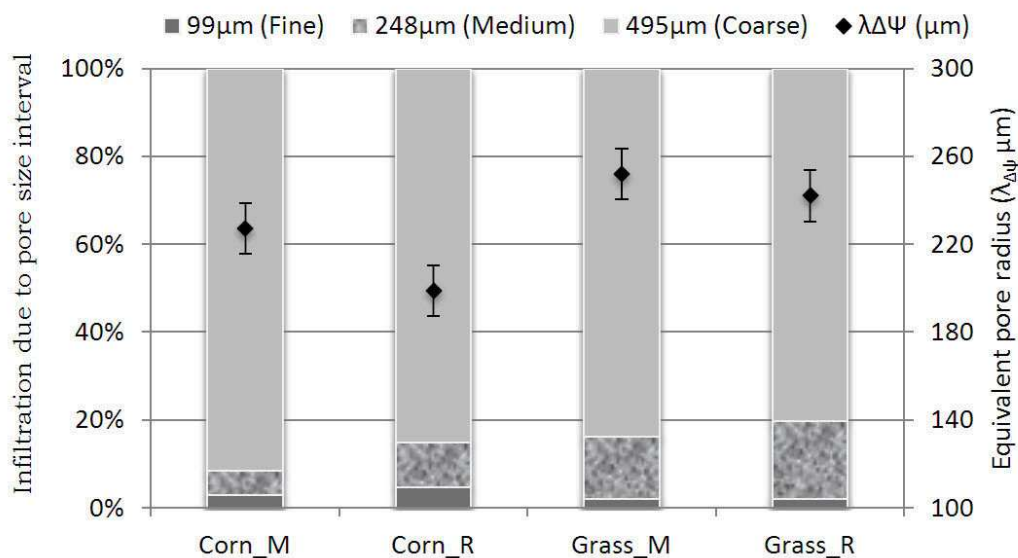


Figure 14. Effect of crop on macropore development. Pore size intervals are divided into fine, medium, and coarse pore sizes in relationship to infiltration rates based on tension infiltrometer data. The data point represents the equivalent pore radius associated with near saturated water flow.

The effect of residue removal at Flandreau on mean equivalent pore radius was the only observable significant effect on corn residue removal in this study during the relatively short treatment period of this study (3 years). However a direct reduction in macropores contributing to water flow as evidenced by a reduction in equivalent mean pore diameters suggests that caution be used when removing as much as 75% of the corn stover for biofuel as this resulted in statistically significant deterioration in soil structure. Harvest of switchgrass did not have the same effect and the growing of switchgrass generally improved macropore development in these plots.

Water Dynamics:

Soil water content

Soil water content was measured at two sites (Flandreau and Warner) during 2008-2011. For the purposes of this report the Flandreau, 2010 site will be used to illustrate study results. The water content was measured approximately every two weeks by neutron attenuation for each 0.3 m for the top 1.8 m of the soil profile. There were 3 landscape positions at the Flandreau site- top of hill (shoulder), mid-hill (backslope), and bottom of hill (footslope). Each landscape position had four replicates.

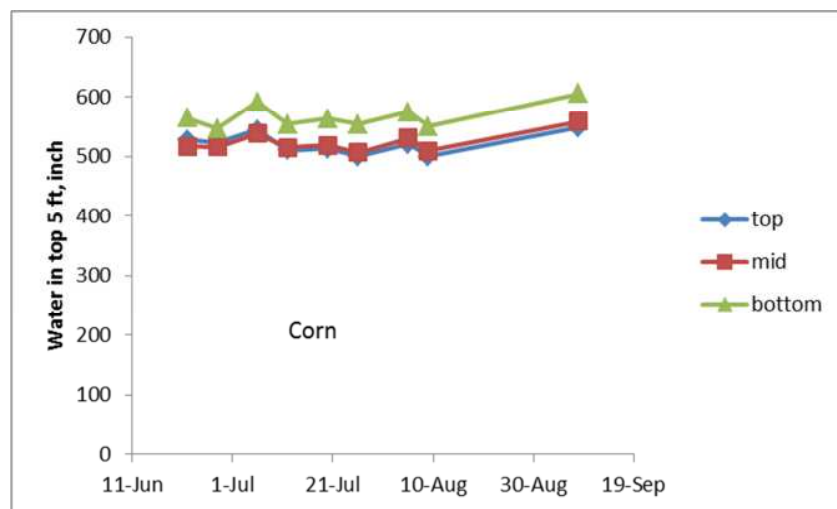


Figure 15. Volumetric soil water content in the corn plots, Flandreau site, 2010.

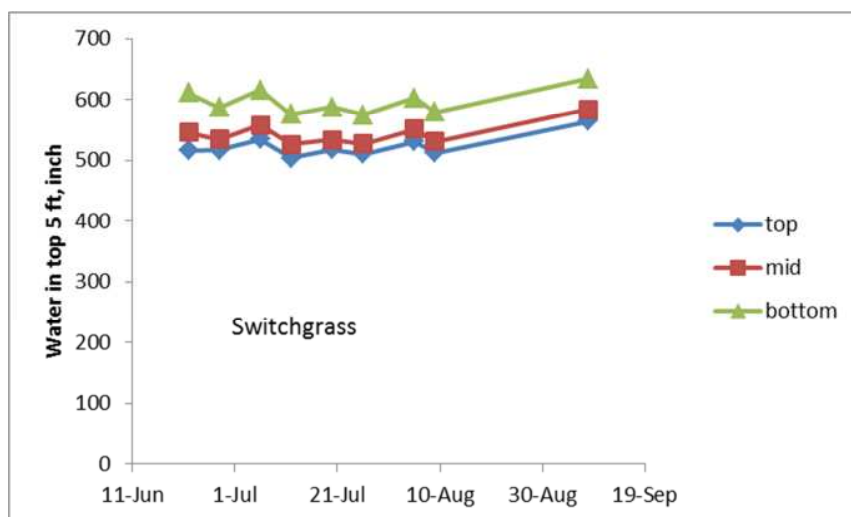


Figure 16. Volumetric soil water content in the switchgrass plots, Flandreau site, 2010.

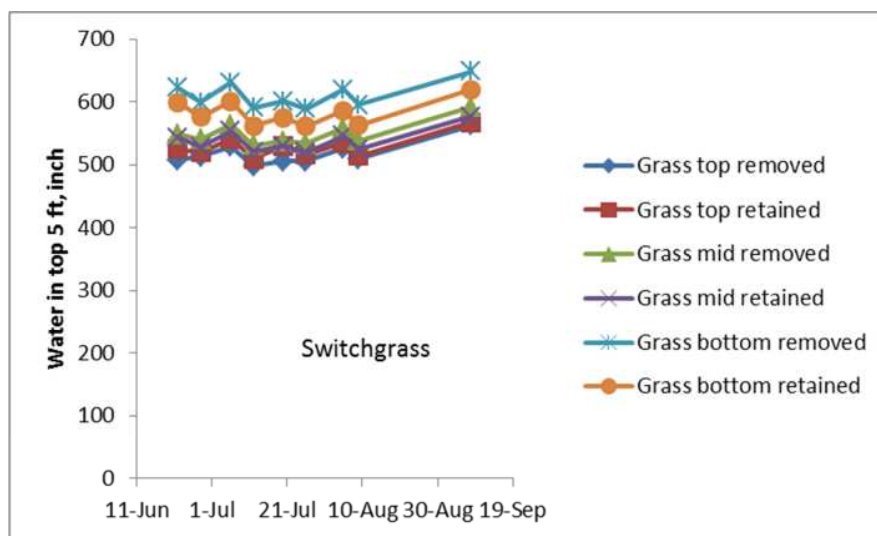


Figure 17. The effect of residue removal on volumetric soil water content in the switchgrass plots, Flandreau site, 2010.

Evapotranspiration

Crop evapotranspiration (ET_c) values (Tables 9,10) were calculated with a form of Penman equation. For the 2008 and 2011 season at Flandreau, alfalfa-based reference ET (ET_r) was downloaded from the SDSU Automated Weather Data Network web site (AWDN, data at climate.sdstate.edu). For the 2009 and 2010 seasons, weather data were collected with the on-site weather station. Those weather data were used in the software Ref-ET to calculate short-crop reference ET (ET_o) using the Penman-Monteith equation. Single crop coefficients were used to calculate ET_c with the corresponding reference ET data. The maize crop curves for ET_o were from FAO 56 (1998). Switchgrass crop curves were not readily available. The crop coefficients used in this work were based on grass species with similar characteristics with published values in FAO 56.

The growing season of 2011 at Flandreau was a tale of two seasons. The early part of the growing season was wet and cool. After mid-July, the rain stopped and the heat started. The corn emerged on 4 June, reached full cover on 1 July, began senescing on 1 September and was done on 20 September. The switchgrass started greening up on 10 May, reached full cover on 10 July, began senescing on 15 August and was done on 7 September.

Water use (evapotranspiration, or ET) of corn and switchgrass were estimated using the form of the Penman equation used by the SD State Climate Office weather stations (climate.sdstate.edu). The weather data and reference ET values for the Flandreau weather station were used for this work. The Flandreau weather station is located 3 miles from the research site. The standard crop

coefficient for corn was used. There are currently no crop coefficients available for switchgrass so a grass crop curve similar to other grasses was used, based on FAO 56.

Corn cardinal dates (emergence, full cover, senescence, and maturity) were based on visual observations at the site. Switchgrass dates are long-term averages based on discussions with switchgrass specialists (unpublished data).

Table 9. Water use of corn by month at the Flandreau site, mm.

Month	2008	2009	2010	2011
May	64.8	75.3	43.6	21.0
June	153.8	136.6	131.8	82.4
July	202.2	165.4	167.4	189.0
August	135.4	145.0	140.9	146.6
September	27.6	57.7	22.4	58.4
Total	583.8	580.0	522.6	497.4

Table 10. Water use of switchgrass by month at the Flandreau site, mm.

Month	2008	2009	2010	2011
May	31.1	36.2	24.6	31.4
June	89.4	79.8	85.9	90.2
July	148.1	121.5	136.1	154.0
August	96.9	103.0	110.9	110.0
September	27.3	53.7	39.6	27.4
Total	392.8	394.2	397.1	413.0

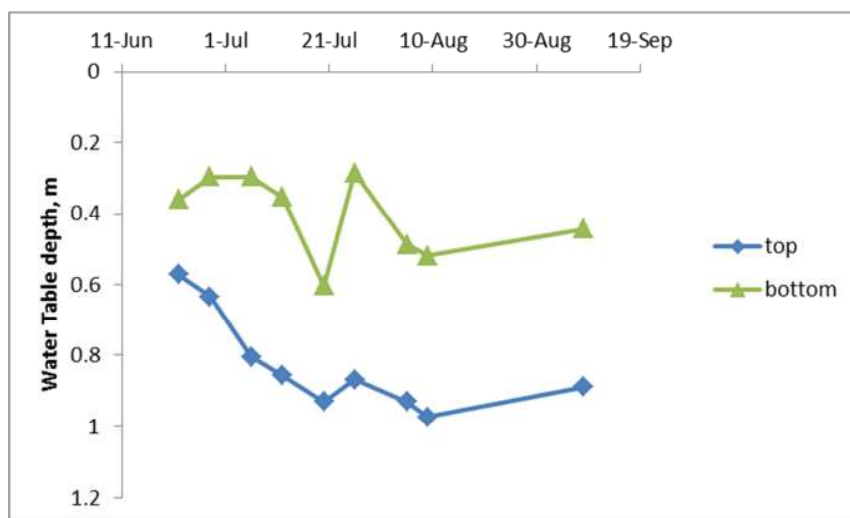


Figure 18. Water table depth in two corn plots at two landscape positions at the Flandreau site, 2011.

At the Flandreau site, the soil water content in the top 5 feet of the soil profile stayed high during the entire growing season (Fig 18). The minimum water content of 19.7 inches in the top 5 ft is an average volumetric content of 41%. The high water table at this site is keeping the water content high. Even during the drier second half of the 2011 growing season, when rain was infrequent, crops at this site should not have been experiencing stress due to inadequate soil water content because the high water table was providing adequate water for the crops.

Economic Feasibility:

The overall objective of capital budget analysis of this project is to measure the relative profitability of the three crop systems (multiple cellulosic feedstock, entirely switchgrass, entirely corn) depending on the landscape position, and on the residue management. The budget analysis contained in this report, which is based on yields, cost, and price data for 2008, 2009, and 2010, are necessary building blocks for construction of long term capital budgets and should be considered a preliminary subsequent to a more complete analysis.

The management scenarios examined in these preliminary budgets are sale of corn for grain and grass for hay production (at two different price levels). The annual budgets for corn include yields, costs, and returns for each year (2008, 2009, and 2010) using input price levels and average output prices for the crop year. The 2008 and 2009 budgets for switch grass and mixed-grass show the costs incurred to establish grass production on cropland. The budget for 2010 is the first year that production (hay yields) are obtained and the budgets reflect costs and returns using two output price scenarios (\$40 per ton and \$69 per ton).

The capital budgets (to be developed) will be based on price, cost, and management scenarios for a 10-year or similar long-term period and will include annualized costs of establishing switch grass, and mixed grasses.

Detailed Summary of Preliminary Budgets for 2008, 2009, and 2010

Profitability coupled with risks help farmers to make decisions. These two parameters determine farmers' crop systems choices. Even if some farmers value the environment, they are sometimes forced to choose techniques more profitable than sustainable. The amount of risks that most farmers are willing to accept depends on the potential profits. Moreover, switching to a more sustainable crop system is a long process that requires time and money investment. The benefits of more sustainable crops systems are not often noticeable in the first few years and therefore farmers can be reluctant to change.

The analysis presented here are preliminary budgets for costs and returns in 2008, 2009, and 2010. The main profit variable examined is returns to management and labor. Other variables are also considered; gross return, total direct costs, and total costs. Gross returns are the long term average return assumed to be earned before deducting management fees and other input expenses; it is the total revenues from grain sales, insurance indemnities, and government

payments. Returns to management and labor are net returns after deducting all expenses (total costs) from the gross returns. Total direct costs are all the variable costs associated with production; seeds, fuel, fertilizers, chemicals, machinery operating, etc. Total costs are total direct costs plus land charge and machinery ownership costs.

This economic analysis is based only on data from two sites of Flandreau and Colman. Farming practices on these lands are similar to local farming practices. Therefore additional data will be taken from the experiment and also from South Dakota State University reports and from South Dakota NASS.

This preliminary analysis presents a capital budget for the different crops and the landscape position; all corn, all switch grass, all mixed grass, corn foot slope, corn crest, corn back slope, switch grass foot slope, switch grass crest, switchgrass back slope, mixed grass foot slope, mixed grass crest, and mixed grass back slope.

The yields have been taken for the years 2008, 2009, and 2010. The budget for the perennial grasses has not been annualized yet. This budget is only done for the experimental farm; the generalization for an eastern South Dakota farm will be realized later.

Some of the data have been estimated, that is why these budgets can only be considered as preliminary budgets. Some key assumptions are:

- All budgets are estimates on a per acre basis and have not been weighted to a field level.
- The insurance costs and government payments have not been included in the budgets
- The grass seed cost have been estimated from Millborn Seed information on grass seed costs, at \$7.50 per pound, and the rate of seeding was estimated at 10 lbs/acre.
- The co-products revenue for grass or corn has not yet been included.
- The machinery costs are estimated and will be more precise as we get the detailed management schedules. At this point custom rates for custom planting and harvesting of corn are used instead of a detailed breakdown of machinery ownership and operating costs. Custom rates for specific field operation (mowing, baling etc) were used for the grass hay budgets. The machinery custom rates were obtained from the 2010 Iowa State University custom rates survey.
- The operating interest has not been included at this time.
- The grass budget has not been annualized because we only have one year of yield data that can be used to estimate returns.

- The land charge is based on average cash rent for cropland or hay land for the East Central region of South Dakota (Janssen and Pflueger, 2011)
- Data on corn and grass yields and the major management practices were supplied from the field experiments and furnished by Mr. Kurt Reitsma. The unit costs were obtained from annual SDSU crop budgets, SD Agricultural Statistics Service and related sources.

Data in Table 11 contains a summary of gross yields, direct operating costs, and total cost – excluding management and labor charges for corn, switch grass, and mixed grass overall and by slope position (back slope, crest, and foot slope). Data in table 12 are gross returns and returns to management and labor for the corn budgets.

Table 11. Crop / grass yield, direct cost, and total costs per acre for 2008, 2009, and 2010.

CROPS	YIELDS (CORN: BUSHEL/ACRE GRASS: US TON / ACRE)			TOTAL DIRECT COSTS (\$ PER ACRE)			TOTAL COST (\$ PER ACRE)		
	2008	2009	2010	2008	2009	2010	2008	2009	2010
All Corn				301.9	385.1	281.4	410.9	514.1	414.6
All SWG	151.0	109.4	138.1						
			4.5	175.4	31.5	141.4	256.3	120.2	224.9
All MXG			4.5	175.4	31.5	141.4	256.3	120.2	224.9
Corn_BS	153.9	110.7	147.1	285.8	388.9	335.3	394.8	517.9	468.5
Corn_CRST	146.0	115.3	169.1	266.8	356.5	332.3	375.8	485.5	465.5
Corn_FS	153.0	102.3	98.3	313.3	365.8	308.8	422.3	494.8	442.0
SWG_BS			4.8	175.4	31.5	148.8	256.3	120.2	232.3
SWG_CRST			4.3	175.4	31.5	134.4	256.3	120.2	217.9
SWG_FS			3.8	175.4	31.5	122.0	256.3	120.2	205.5
MXG_BS			5.6	175.4	31.5	173.8	256.3	120.2	257.3
MXG_CRST			4.3	175.4	31.5	134.4	256.3	120.2	217.9
MXG_FS			3.6	175.4	31.5	116.0	256.3	120.2	199.5

SWG: Switchgrass – MXG: Mixed grass – BS: Back slope – CRST: Crest – FS: Foot slope

The corn budget results are greatly affected by the variability in yields across the three years and across landscapes and by variability in market prices (\$3.78 in 2008, \$3.23 in 2009, and \$5.10 in 2010). Corn was highly profitable in 2008 and 2010, but had negative returns to labor and management in 2009. In fact, corn production revenues in 2009 did not even fully recover direct

operating costs! The budgets also show that direct production costs per acre for corn are much higher than establishment costs for switch grass and mixed grass in the first two years, and also much higher than direct cost of grass harvesting (and maintenance) in the third year.

Table 12. Gross return and return to management and labor, all corn and corn by slope phase, 2008, 2009, and 2010.

CROPS	GROSS RETURN (\$ PER ACRE)			RETURN TO MANAGEMENT AND LABOR (\$ PER ACRE)		
	2008	2009	2010	2008	2009	2010
All Corn	570.7	353.4	704.6	159.7	(160.7)	290.0
Corn_BS	581.7	357.5	750.2	186.9	(160.4)	281.7
Corn_CRST	552.0	372.3	862.2	176.2	(113.2)	396.8
Corn_FS	578.3	330.4	501.3	156.0	(164.4)	59.3

BS: Back slope – CRST: Crest – FS: Foot slope

Data in table 13 are gross returns and returns to management and labor for the grass budgets. In this case, only costs are incurred for years 1 and 2 while some returns are available from grass hay production in year 3. As mentioned earlier, two grass hay prices were examined: \$40 / ton which was required as one of the hay prices to examine and \$69 per ton which is the average “other hay (non-alfalfa hay)” price for 2010 (South Dakota Agriculture 2011 bulletin, June 2011).

Table 13. Gross Return and Return to Management & Labor for Grass Hay Production for Two Price Scenarios (\$40 / ton and \$69 / ton).

CROPS	SCENARIO: GRASS PRICE = \$40/TON						SCENARIO: GRASS PRICE = \$69/TON					
	GROSS RETURN (\$ PER ACRE)			RETURN TO MANAGEMENT AND LABOR (\$ PER ACRE)			GROSS RETURN (\$ PER ACRE)			RETURN TO MANAGEMENT AND LABOR (\$ PER ACRE)		
	2008	2009	2010	2008	2009	2010	2008	2009	2010	2008	2009	2010
All SWG			178.8	(256.3)	(120.2)	46.1			308.4	(256.3)	(120.2)	83.5
All MXG			180.8	(256.3)	(120.2)	44.1			311.9	(256.3)	(120.2)	87.0
SWG_BS			191.0	(256.3)	(120.2)	41.3			329.5	(256.3)	(120.2)	97.2
SWG_CRST			171.2	(256.3)	(120.2)	46.7			295.3	(256.3)	(120.2)	77.4
SWG_FS			154.1	(256.3)	(120.2)	51.4			265.8	(256.3)	(120.2)	60.3
MXG_BS			225.4	(256.3)	(120.2)	31.9			388.8	(256.3)	(120.2)	131.6
MXG_CRST			171.2	(256.3)	(120.2)	46.7			295.3	(256.3)	(120.2)	77.4
MXG_FS			145.8	(256.3)	(120.2)	53.7			251.5	(256.3)	(120.2)	52.0

SWG: Switchgrass – MXG: Mixed grass – BS: Back slope – CRST: Crest – FS: Foot slope

The final analysis will show a representative farm model for eastern South Dakota, a full capital budget analysis with crops rotations and the profitability of each system depending on the

landscapes to determine the breakeven prices. One of the limitations in this study is the fact that switchgrass and other energy crops (except corn) are perennial. The capital budget will therefore be calculated on a long term basis and then annualized. Also, different management scenarios in terms of co-products (such as corn stover) will be examined.

Potential for Transferability of Results

General production information about switchgrass and corn production developed as an outgrowth of this project has been successfully transferred through online publications. The specific results of this study pertaining to precision conservation will become more relevant as bioenergy cellulosic markets are more fully developed. The results of this study have generated questions about establishment of prairie cordgrass, switchgrass, and the use of other precision conservation approaches to improve eroded landscapes (eg. use of the pyrolysis byproduct biochar as a targeted amendment). This has resulted in the development and acquisition of grants addressing these specific questions.

Conclusions

Goal: Apply precision conservation practices by using biomass crops selected for their adaptation to, and conservation impacts on contrasting soil environments occurring in the farm unit.

The results suggest that perennial grass could provide a viable alternative to annual crop production in areas where row crops have the most vulnerability to stress and erosion hazard. Perennial grass crops have less variability of production across landscape positions. Placing perennial grasses in strategic locations within the landscape where corn and other annual crops produce poorly due to seasonal wet soils or poor quality soils could increase profitability of the farming operation in addition to providing wildlife habitat, run-off water filtering, soil stabilization, and carbon storage. However the successful application of this strategy presumes an active and vibrant bioenergy feedstock market. Incorporating multiple crop species into an undulating landscape with frequent swales or seasonal wetlands may require creative logistics including rethinking field layout. As an example in some cases fields built around linear wetlands may better suit prairie cordgrass plantings designed for bioenergy feedstocks. This could also apply to switchgrass seeding adjacent to the prairie cordgrass plantings and on backslopes where erosion protection is desired. The remaining areas of the field could be planted to annual crops such as corn and soybeans with less impact and higher yield potential than if the field was laid out without regard to seasonal wet areas or areas of high erosion hazard. Implementation of this strategy requires a transition period of one to two years and must be included in the planning process by the bioenergy industry, producers, and policymakers.

Goal: Demonstrate, evaluate, and develop soil management practices to protect the landscape from erosion and sedimentation, promote soil quality, and maintain a positive carbon balance.

Symposiums, field tours, and media interviews were used to provide information about multi-cellulosic feedstocks applied to undulating landscapes. A combination of no-till practices with corn and perennial grass production provided year round cover to all parts of the landscape thus minimizing erosion and sedimentation potential. There is significant room to improve the soil quality of soils in Eastern South Dakota as shown by the 50% loss in soil organic matter that has occurred in the topsoil since settlement and cultivation of the land. This project demonstrated that perennial grasses can slowly improve the soil over time. Although this project had a relatively short time frame a significant improvement was seen in wet aggregate stability, a key indicator of management impacts on soil quality and a predictor of improved potential for increased soil organic matter. Corn stover harvest at 75-80% removal rates resulted in a change in macropore structure. This suggests that caution be used when planning continuous and extensive harvest of stover over long periods of time.

Goal: Develop site specific technical guidelines that can be incorporated into technical standards, fact sheets, and handbooks for NRCS, Extension Educators, Crop and Environmental Consultants, and Producers.

Twelve publications have been developed thus far and others are being planned as the data is more completely analyzed and evaluated. Two online publications are currently available that detail extensive information that can be incorporated into daily use by producers, educators, consultants, NRCS staff, and other professional service providers. The technical guide “Switchgrass Management and Production in South Dakota” referenced at <http://igrow.org/up/resources/03-2006-2011.pdf> is a guide to establishing and growing switchgrass that provides much detail and was developed as an outgrowth of this project. The second online publication “Best Management Practices for Corn Production in South Dakota. EC929” referenced at http://pubstorage.sdstate.edu/AgBio_Publications/articles/EC929.pdf was selected as the Selected as the 2010 Outstanding Agronomic Educational Material (>16 pages). by the American Society of Agronomy. This publication was also developed as an outgrowth of this project.

Acknowledgements

Project Director: Tom E. Schumacher

Project Coordinator: Kurtis Reitsma

Co – PIs: David Clay; Gregg Carlson; Douglas Malo; Gerald Warmann; Larry Janssen; Arvid Boe; Vance Owens; Todd Trooien

Producer Collaborators: Prairie Ecosun Farms, Inc.; Leslie Heineman; Mark Bossley; Scott Estabrook

Agronomic Educators: Gary Erickson; Paul O. Johnson; Irene Graves

Visiting Scientist: Francisco Mamani-Pati

Research Associates: Anna Eynard; Joseph Schumacher; Stephanie Hansen; Chang Ho Hong

Graduate Students: R. Kyle Heimerl; I. Emmanuel Vahyala; Nelly Bourlion

Collaborating Institutions: South Dakota Corn Growers Association; South Dakota Agricultural Experiment Station; South Dakota State University Extension Service; Nature Conservancy; USDA-NRCS

Appendix A

Site Maps

CIG - Coleman
Moody County South Dakota

Location: SW 1/4 , Section 33, Township 107N, Range 50W
96°50'37.878"W 44°1'23.139"N

Wentworth-Egan silty
clay loams, 2 to
6 percent slopes

Worthing silty clay loam

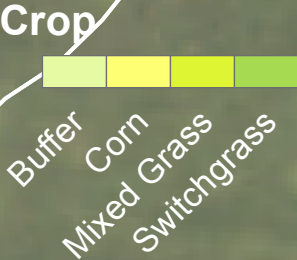
Worthing
silty
clay loam

Dempster-Talmo
complex, 2 to 9
percent slopes

Wentworth-Egan silty
clay loams, 2 to
6 percent slopes

Baltic silty clay loam

Wentworth-Egan silty
clay loams, 2 to
6 percent slopes



101 Residue Removal
102 Residue Maintain
103 Residue Maintain
104 Residue Removal
105 Residue Removal
106 Residue Maintain
201 Residue Maintain
202 Residue Removal
203 Residue Maintain
204 Residue Removal
205 Residue Removal
206 Residue Maintain

301 Residue Removal
302 Residue Maintain
303 Residue Maintain
304 Residue Removal
305 Residue Removal
306 Residue Maintain
401 Residue Maintain
402 Residue Removal
403 Residue Removal
404 Residue Maintain
405 Residue Maintain
406 Residue Removal

307 Residue Maintain
308 Residue Removal
309 Residue Removal
310 Residue Maintain
311 Residue Maintain
312 Residue Removal
407 Residue Removal
408 Residue Maintain
409 Residue Maintain
410 Residue Removal
411 Residue Removal
412 Residue Maintain

501 Residue Removal
502 Residue Maintain
503 Residue Maintain
504 Residue Removal
505 Residue Removal
506 Residue Maintain
601 Residue Removal
602 Residue Maintain
603 Residue Maintain
604 Residue Removal
605 Residue Removal
606 Residue Maintain

Baltic silty clay loam

Precision Conservation Using Multiple Cellulosic Feedstocks

Study Site Near Flandreau SD

96°36'37.77"W 44°4'47.734"N



Legend

Study Plots

Crop

- Corn
- Grass

201 Grass - Residue Removal	101 Grass - Residue Removal
202 Grass - Residue Maintain	102 Grass - Residue Maintain
203 Corn - Residue Maintain	103 Corn - Residue Maintain
204 Corn - Residue Removal	104 Corn - Residue Removal

Kranzburg silty clay loam

Cooperator:
 Leslie J. Heinemann
 47962 228th Street
 Flandreau SD 57028
 (605) 864-1274
 E-Mail: lheinemann@svtv.com

Moody County Extension Educator
 Paul O. Johnson
 500 First Avenue W
 Flandreau SD 57028-1099
 605-997-2469
 (605) 864-1775
 PaulO.Johnson@sdsu.edu

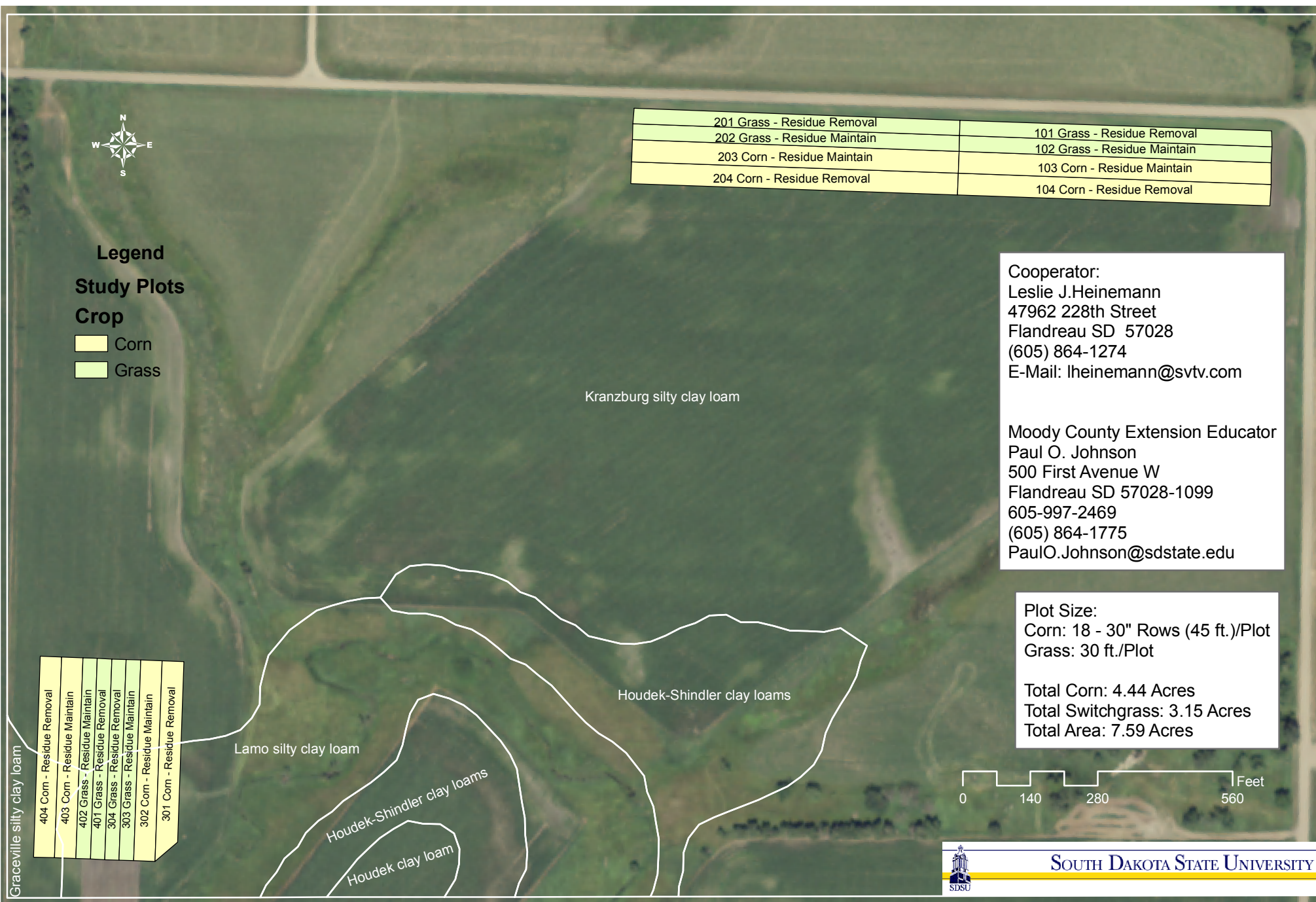
Plot Size:
 Corn: 18 - 30" Rows (45 ft.)/Plot
 Grass: 30 ft./Plot

Total Corn: 4.44 Acres
 Total Switchgrass: 3.15 Acres
 Total Area: 7.59 Acres

0 140 280 560 Feet



SOUTH DAKOTA STATE UNIVERSITY



Precision Conservation Using Multiple Cellulosic Feedstocks

Study Site Near Warner SD

98° 32' 54" W 45° 16' 21" N

Winship-Tonka silt loams

Exline-Putney silt loams, 1 to 4 percent slopes

404 Grass Residue Removal
403 Grass Residue Maintain
402 Corn Residue Maintain
401 Corn Residue Removal
304 Grass Residue Maintain
303 Grass Residue Removal
302 Corn Residue Maintain
301 Corn Residue Removal
204 Corn Residue Maintain
203 Corn Residue Removal
202 Grass Residue Maintain
201 Grass Residue Removal
104 Grass Residue Maintain
103 Grass Residue Removal
102 Corn Residue Maintain
101 Corn Residue Removal

Exline-Aberdeen-Nahon silt loams

Harriet loam

Bearden silt loam, saline

Ludden silty clay, ponded

Exline-Putney silt loams, 1 to 4 percent slopes

146 ST

Plot Size:

Corn: 18 - 30" Rows (45 ft.)/Plot

Grass: 30 ft./Plot

Total Corn: 4.25 Acres

Total Grass: 3.0 Acres

Total Area (Including Buffer): 7.5 Acres

Mark Bossly

38352 146th Street

Mansfield SD 57460-6903

(605) 225-4944



SOUTH DAKOTA STATE UNIVERSITY

CIG - Woonsocket

Sanborn County South Dakota

Latitude: 43.922722 Longitude: -98.288588
Location: NW 1/4, Section 9, Township 105N, Range 62W.

Tetonka-Davison-Clarno complex, 0 to 2 percent slopes

101 Corn Residue Removal
102 Corn Residue Maintain
103 Grass Residue Removal
104 Grass Residue Maintain
201 Grass Residue Removal
202 Grass Residue Maintain
203 Corn Residue Maintain
204 Corn Residue Removal
301 Corn Residue Maintain
302 Corn Residue Removal
303 Grass Residue Removal
304 Grass Residue Maintain
401 Corn Residue Removal
402 Corn Residue Maintain
403 Grass Residue Maintain
404 Grass Residue Removal

Carthage-Hand fine sandy loams, 2 to 6 percent slopes

Hand-Ethan loams, 2 to 6 percent slopes

Sanborn County Extension Educator
Irene Graves
304 S. Dumont, PO Box 397
Woonsocket SD 57385
Office: (605) 796-4380
Cell: (605) 350-3253
E-mail: Irene.graves@sdstate.edu

Cooperator:
Scott Estabrook
39948 243rd Street
Mount Vernon SD 57363
Cell: (605) 248-2302

Plot Size:
Corn: 8 - 38" Rows (25 ft.)/Plot
Grass: 18 ft./Plot

Total Corn: 1.5 Acres
Total Grass: 1.0 Acres
Total Area: 2.5 Acres



SOUTH DAKOTA STATE UNIVERSITY

Appendix B

Symposium / Field Tour Programs

CARBON & ENERGY

Dave Clay & Gregg Carlson

Current and evolving technology allows for research to be conducted on a field scale improving our understanding of cropping systems. Field scale studies aimed at quantifying carbon sequestration and footprints are in-progress at several locations across the state. Selected sites have state of the art equipment consisting of a Carbon Flux Tower and Li-Core soil respiration measurement devices. Data collected from these sites will be used to determine carbon and energy footprints of agricultural systems.

PRECISION CONSERVATION USING MULTIPLE CELLULOSIC FEEDSTOCKS

Tom Schumacher

This project is designed to demonstrate and evaluate site-specific conservation practices that integrate production of multiple sources of cellulosic biofuel feedstocks with natural resource conservation. Four sites near Flandreau, Colman, Warner, and Woonsocket were selected to demonstrate the potential and effects of producing cellulosic feedstocks consisting of corn stover, switchgrass, and prairie cordgrass.

Registration Information

**\$25.00 Per Person if registered
before September 25th, 2009**

**\$35.00 Per Person if registered
after September 25th, 2009**

**Includes Tour, Morning Coffee,
Lunch, and Afternoon Snack.**

Name: _____

Address:

Telephone: _____

Email:

Registration may be submitted via e-mail, fax, or telephone; with payment due the day of the meeting, cash or check only. If submitting by e-mail, fax, or phone; include total number of people attending and list of names and contact information.

Please submit registration to:
Kurtis Reitsma
SDSU Plant Science Department
SAG 206, Box 2207A
Brookings SD 57007
Kurtis.Reitsma@sdstate.edu
(605) 688-4594
Fax: (605) 688-4602

AGRICULTURE FOR A CHANGING ENVIRONMENT

Discussion of Carbon and Energy
Enterprise and Research in
Agriculture



September 30th, 2009

AGRICULTURE FOR A CHANGING ENVIRONMENT

Wednesday September 30th, 2009

Agenda

7:30 – 8:30 Registration

Swiftel Center, Room C - Brookings

8:30 Board Bus for Midwest Center for
Wind Energy, Hendricks MN

9:30 Arrive at MCWE, Hendricks MN

Welcome and Opening Remarks

Don Marshall, SDSU

Overview of Midwest Center for Wind
Energy

Jim Nichols, MCWE

Tour of Wind Farm

(10:30) Biomass Supply Chain for
Ethanol Production

Mike Roth, POET

(10:45) Bio-Diesel Production in South
Dakota

Brian Stork, Hanson County Oil Producers

(11:00) Nitrogen from Stranded
Electricity

Gregg Carlson, SDSU

(11:15) Ethanol Production Input on
Carbon and Nutrient Efficiency

Dave Clay, SDSU

(11:30) Tower Flux Measurements of
CO₂ Exchange in Agro-Ecosystems.

Tagir Gilmanov, SDSU

(11:45) Conservation Innovation Grant
Program & Conservation Stewardship
Program

Jeff Hemmenway, NRCS
Rick Bednarek, NRCS

12:00 Noon Luncheon

1:00 PM: Board Bus for Field Tours

1:00 – 2:00 Travel to Flandreau

2:00 PM – Field tour of Flandreau site

(2:00) Overview of Precision
Conservation Using Multiple
Cellulosic Feedstocks

Tom Schumacher, SDSU

(2:15) Water Use of Corn and
Switchgrass

Todd Trooien, SDSU

(2:30) Overview of Feedlot
Renovation Project

Brian Scott, SD Department Agriculture

30 Minute Travel to Colman Field

3:00 PM – Field tour of Colman site

Refreshments

(3:30) Overview of EconSun Farms

Carter Johnson, SDSU

(3:45) Switchgrass and Prairie
Cordgrass Production

Vance Owens, SDSU

(4:00) Grass Cultivar Development for
Improved Production

Arvid Boe, SDSU

4:45 Travel to Brookings

6:00 Adjourn.

Welcome to EcoSun Prairie Farms

EcoSun Prairie Farms is a South Dakota non-profit corporation formed in April, 2007. It received tax exempt status and classification as a public charity from the Internal Revenue Service (IRS) in February, 2008.

EcoSun was established to demonstrate to agricultural producers, public servants, conservationists, and the general public the potential economic and ecological benefits of establishing grass-based farms on converted cropland on some of the most productive soils in the former tall grass prairie region of central North America.

To advance this goal, EcoSun has leased and is managing a private, working farm (hereafter called “The Prairie Farm”) for the purpose of demonstrating how to make a sustained and earned living from restored grassland and grass products while protecting and enhancing the natural environment. This concept contrasts with most modern agricultural practices and commodities that are less sustainable in the long run because of large fossil fuel inputs for production and distribution, environmental degradation in the form of soil erosion, ground and surface water pollution, biocide residues, and impoverishment of natural resource capital such as biodiversity and soil carbon. Also, much of current agriculture rests on an economic foundation of commodity price supports that are likely to be reduced or even eliminated in the future.

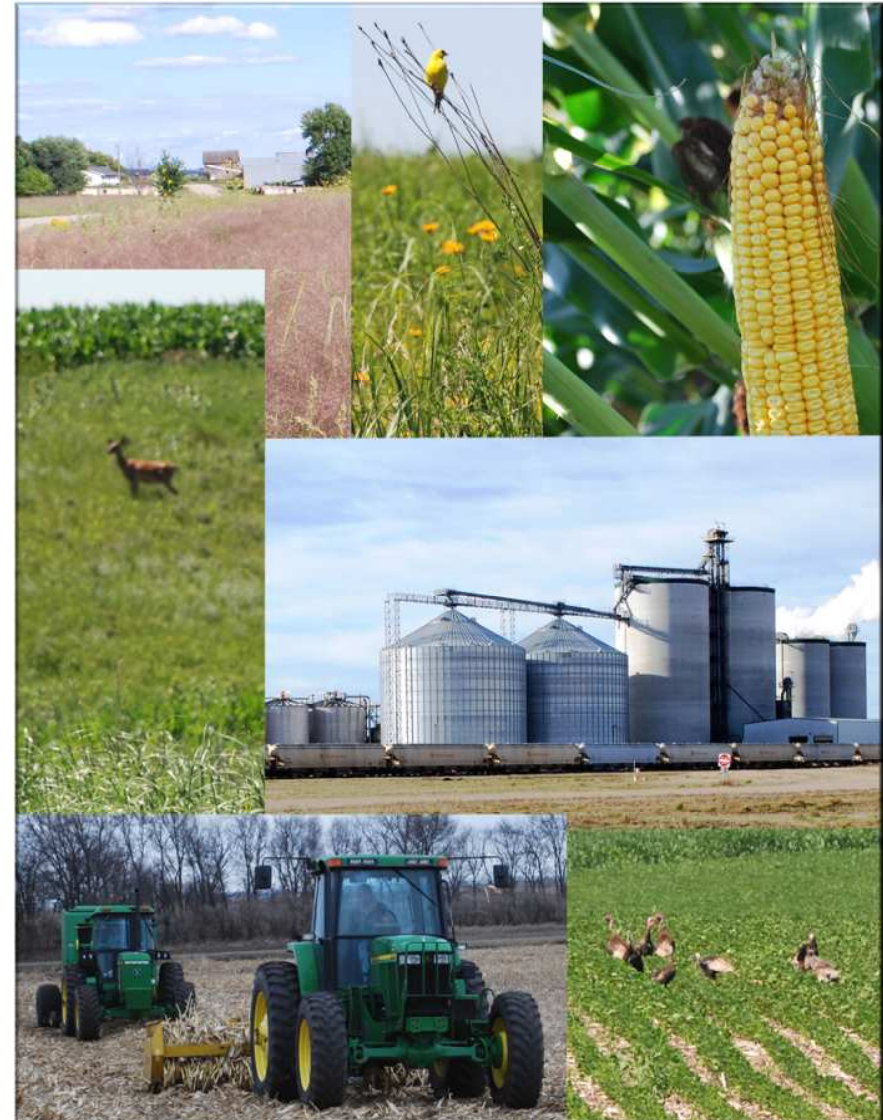
The Prairie Farm promotes the benefits of a working landscape by emphasizing the potential of multifunctional agriculture, defined as the joint production of standard commodities (e.g., food and/or fiber) and ecological services such as clean air and water and high biodiversity.

Visit us on the web at: <http://ecosunprairiefarms.org/>

Prairie Establishment for Biofuels & Wildlife

August 16th, 2010

EcoSun Prairie Farms, Colman SD



Welcoming Comments

EcoSun Prairie Farms Overview

Dr. Carter Johnson –Chairperson, EcoSun Prairie Farms

Rural Advantage: 3rd Crops & Bioenergy

Jill Sackett -UMN Extension Educator



An application for Continuing Education Units (CEU) for Certified Crop Advisors (CCA) has been submitted. Please make sure you have completed the sign-up sheet.

In the Field

- 1) Matching Biofuel Crops to the Land
- 2) Renovating CRP for Feedstock Production
- 3) Prairie Cordgrass Production & Wetland Restoration
- 4) Establishment and Management of Grassland
- 5) Harvesting Grassland and Wildlife Habitat
- 6) Switchgrass: Seed & Feedstock Production
- 7) Cup Plant; Increasing Bio-Diversity in Feedstock Production

Featured Speakers:

- Dr. Arvid Boe
SDSU, Plant Science Department
- Dr. Carter Johnson
SDSU, Horticulture Forestry Landscape and Parks
- Dr. Vance Owens
SDSU, Plant Science Department
- Dr. Susan Rupp
SDSU, Wildlife and Fisheries Sciences
- Ms. Jill Sackett
University of Minnesota Extension
- Dr. Tom Schumacher
SDSU, Plant Science Department

APPENDIX C

Climate, Physiography, Soils

WARNER SITE

Physiography

The soils at the Warner Site (98° 32' 54" W, 45° 16' 21" N; SW1/4, Section 21, T121N, R64W of 5th principle meridian, Brown County, SD) are found in MLRA 55B. MLRA 55B covers about 11 million acres in North and South Dakota and is located in the Western Lake Section of the Central Lowland Province of the Interior Plains (USDA-NRCS, 2006). The study site is characterized by glacial lacustrine deposits from glacial Lake Dakota. The lacustrine sediments are silty and clayey in texture in this site and are strongly calcareous and moderately saline. The area is nearly level to gently undulating with many poorly defined drainage ways and wetlands. The James River drains the area to the south. Approximately, 75% of the land in MLRA 55B is used for cropland, 15% for range/pasture land, and 10% is urban, water, and other uses (USDA-NRCS, 2006).

Climate

The area receives about 17.5 inches of precipitation annually with 13.5 inches or 75% falling during the growing season (April-September). Most of the growing season precipitation is associated with high intensity thunder storms. During the winter the area receives about 35 inches of snow (Schultz, 1994). The precipitation levels have resulted in the leaching of carbonates to a depth of 15 to 17 inches in well drained soils. The average annual air temperature is 43°F. The average frost-free period (28°F basis with 50% probability) is May 3 to October 4 or 153-day growing season. The average number of growing degree days (40°F basis) during the period of May through September is 3800 (Schultz, 1994).

Soils

The dominant soils in the plots are the Exline, Putney, Aberdeen, and Nahon (Soil Survey Staff, 2011). Associated adjacent soils are the Bearden, Harriet, Ludden, Tonka, and Winship. The soils in the research plots have limited productive capability due to natric horizons [high pH values (>8.3), high SAR (sodium adsorption ratios) levels (>13), and low permeability (<0.5 micro m/sec) within 3 inches for Exline, 9 inches for Nahon, and 11 inches for Aberdeen. The Putney soils have high (>4 mmhos/cm) EC (electrical conductivity) values at 15 inches (see Tables 1a, 1b, and 1c for additional soils information). As a result, the crop productivity index values (a relative ranking from 0 to 100 of soils based on potential for intensive crop production) for the EyA (Exline-Aberdeen-Nahon) and Ex (Exline-Putney) are 46 and 39, respectively, when compared to the best soils in Brown County. The crop productivity ratings assume: a) adequate management, b) natural weather conditions (no irrigation), c) artificial drainage where needed, d) no frequent flooding in lower lying soils, and e) no land leveling or terracing. The average range production for EyA and Ex are 2186 and 2165 lbs/a respectively with the highest range production values in Brown County at more than 6100 lbs/a (Soil Survey Staff, 2011). The dominant Great Groups in this site are Natrudolls and Hapludolls with a frigid temperature regime, a udic moisture regime, a smectitic or mixed mineraology, fine or fine silty particle size classes, and a superactive cation exchange activity class. The Harriet (Natraquolls), Ludden (Endoaquerts), and Tonka (Argialbolls) are hydric soils formed in local alluvium in depressions/swales and have aquic moisture regimes. Bearden (Calciaquolls, non-hydric) and Winship (Argiudolls) soils are found in swales and rim areas of swales. The soils found at the site are mapped in more than 2 million acres in North and South Dakota (USDA-NRCS, 2011).

References

1. Schultz, L.D. 1994. Soil Survey of Brown County, South Dakota. USDA-SCS. US Government Printing Office. Washington, DC.
2. Soil Survey Staff, Natural Resources Conservation Service, United States Department of Agriculture. Web Soil Survey. Available online at <http://websoilsurvey.nrcs.usda.gov/>. Accessed Dec 16, 2011.
3. USDA-NRCS. 2006. Land Resource regions and Major Land Resource Areas of the United States, the Caribbean, and the Pacific Rim. US Department of Agriculture Handbook 296.
4. USDA-NRCS. 2011. Soil Extent Mapping Tool. USDA-NRCS. Available online at <http://www.cei.psu.edu/soiltool/semtool.html>? Accessed Dec 21. 2011.

Table 1a. Soil and Landform Information for Warner, Brown County, SD Site (98° 32' 54" W, 45° 16' 21' N; SW ¼, Sec 21, T121N, R64W of 5th Principle Meridian).

Map Unit Symbol	Map Unit Name	Pct Slope	Land-form	Landform Position	Parent Material	Drainage Class	Depth Range to High Water Table (in)	Flooding Frequency	Ponding Frequency
Bp	Bearden silt loam, saline	0-1	Rims on swales	Footslope	Silty glaciolacustrine deposits	Somewhat poorly drained	18 to 42	None	None
Ex	Exline-Aberdeen-Nahon silt loams	0-2	Plains	Footslope/ Backslope/ Backslope	Clayey glaciolacustrine deposits	Somewhat poorly/ moderately well/ moderately well drained	18 to 42/ 42 to 60/ 42 to 60	None	None
EyA	Exline-Pugsley silt loams	1-3/ 2-4	Plains	Footslope/ Backslope	Clayey glaciolacustrine and silty glaciolacustrine deposits	Moderately well/ well drained	42 to 60 / more than 80	None	None
Hr	Harriet loam	0-1	Flood plains	Toeslope	Clayey alluvium	Poorly drained	0 to 12	Occasional	None
Lw	Ludden silty clay loam, ponded	0-1	Flood plains	Toeslope	Clayey alluvium	Very poorly drained	0	Frequent	Frequent
Wt	Winship-Tonka silt loams, undrained	0-1	Swales/ potholes	Toeslope	Silty glaciolacustrine deposits/ clayey alluvium	Somewhat poorly/ poorly drained	18 to 42/ 0	None	None/ Frequent

Table 1b. Soil and Landform Information for Warner, Brown County, SD Site (98° 32' 54" W, 45° 16' 21' N; SW ¼, Sec 21, T121N, R64W of 5 th Principle Meridian).									
Map Unit Symbol	Map Unit Name	Available Soil Water Holding Capacity (in/60 in)	Surface Available Water holding Capacity (in/in)	Surface Saturated Hydraulic Conductivity (micro m/sec)	Land Capability Classification	Ecological Site	Hydric Designation for Named Soils*	Soil Classification	Crop Prod Index**
Bp	Bearden silt loam, saline	7.9	0.14-0.16	4.0 – 14.0	3s	Saline Subirrigated (R055BY076ND)	No	Fine-silty, mixed, superactive, frigid Aeric Calciaquolls	66
Ex	Exline-Aberdeen-Nahon silt loams	9.3/ 10.1/ 9.5	0.19-0.22	4.0 – 14.0/ 1.4 – 4.0/ 4.0 – 14.0	6s/3s/4s	Thin Claypan (R055BY066ND)/ Clayey (R055BY056ND)/ Limy Subirrigated (R055BY057ND)	No	Fine, smectitic, frigid, Leptic Natrudolls/ Fine, smectitic, frigid Glossic Natrudolls/ Fine, smectitic, frigid, Calcic Natrudolls	39
EyA	Exline-Putney silt loams	9.3/ 10.3	0.19-.0.22	4.0 – 14.0	6s/2e	Thin Claypan (R055BY066ND)/ Loamy (R055BY064ND)	No	Fine, smectitic, frigid, Leptic Natrudolls/ Fine-silty, mixed, superactive, frigid Calcic Hapludolls	46
Hr	Harriet loam	7.9	0.18-0.22	4.0 – 14.0	6s	Saline Lowland (R053BY006ND)	Yes (2B3)	Fine, smectitic, frigid Typic Natraquolls	7
Lw	Ludden silty clay, ponded	9.7	0.16-0.18	0.4 – 1.4	8w	Not suited for agricultural use	Yes (2B3, 3, 4)	Fine, smectitic, frigid Typic Endoaquerts	9
Wt	Winship-Tonka silt loams undrained	12.3/ 10.9	0.19-0.22/ 0.18-0.23	4.0 – 14.0	2w/4w	Loamy Overflow (R055BY059ND)/ Wet Meadow (R055BY071ND)	No /Tonka yes (2B3, 3)	Fine-silty, mixed, superactive, frigid Pachic Argiudolls/ Fine, smectitic, frigid Argiaquic Argialbolls	76

* - Based on the criteria for hydric soil identification (<http://soils.usda.gov/use/hydric/criteria.html>, verified Dec 19, 2011).

** - Crop Productivity Index – top crop producing soil in Brown County is rated at 100.

Table 1c. Soil and Landform Information for Warner, Brown County, SD Site (98° 32' 54" W, 45° 16' 21' N; SW ¼, Sec 21, T121N, R64W of 5 th Principle Meridian).												
Map Unit Symbol	Map Unit Name	Hydro-logic Group	Erosion Factor Kf	Erosion T Factor	Surface % sand	Surface % silt	Surface % clay	Surface Cation Exchange Capacity (meq/100g)	Surface Soil Reaction (pH)	Surface Salinity (mmhos/cm)	Surface Sodium Adsorption Ratio	Surface Calcium Carbonate (pct)
Bp	Bearden silt loam, saline	C	0.37	5	11.7	69.8	18.5	25 – 40	7.4 – 7.8	4.0 - 16	0 – 2	0 – 10 [#]
Ex	Exline-Aberdeen-Nahon silt loams	D/C/D	0.37	2/5/2	24.6/ 19.7/ 24.1	52.4/ 54.3/ 51.4	23.0/ 26.0/ 24.5	11 – 20/ 25 – 30/ 20 – 30	6.1 – 7.8/ 5.6 – 7.3/ 5.6 – 7.3	0 – 2.0/ 0 – 2.0/ 0 – 2.0	0*/ 0/ 0 – 3	0
EyA	Exline-Putney silt loams	D/B	0.37	2/5	24.6/ 9.5	52.4/ 67.5	23.0/ 23.0	11 – 20/ 13 – 26	6.1 – 7.8	0 – 2.0	0*/ 0 – 1	0+
Hr	Harriet loam	D	0.32	2	43.0	38.5	18.5	13 – 23	6.6 – 8.4	0** – 2.0	0**	0
Lw	Ludden silty clay loam, ponded	D	0.28	5	5.3	44.7	50.0	25 – 50	6.1 – 8.4	0 – 4.0	0	0 – 10 [#]
Wt	Winship-Tonka silt loams undrained	C/D	0.37	5	11.2/ 24.8	66.8/ 52.7	22.0/ 22.5	25 – 30/ 10 – 40	6.6 – 7.8/ 5.6 – 7.8	0 – 2.0/ 0	0	0

* Exline soils have high SAR values (5 to 20) within 3 inches of the soil surface.

** Harriet soils have very high SAR (13-25) and EC (4 to 16 mmhos/cm) values within 2 inches of the soil surface.

Bearden has up to 45 % CaCO₃ at 8 inch depth, Putney has up to 40% CaCO₃ at 15 inch depth, and Harriet has up to 45% CaCO₃ at 2 in depth.

WOONSOCKET SITE

Physiography

The soils at the Woonsocket Site (98.288588° W, 43. 922722° N; NW1/4, Section 9, T105N, R62W of 5th principle meridian, Sanborn County, SD) are found in MLRA 55C. MLRA 55C covers about 7 million acres in South Dakota and is located in the Western Lakes Section of the Central Lowland Province of the Interior Plains (USDA-NRCS, 2006). The study site area is characterized by gently sloping and undulating loamy and sandy glacial outwash overlying loamy and clayey till with closed depressions and loamy drift and loamy till parent materials on the east side. The loamy outwash deposits have been reworked by wind action and overly loamy till. The till and drift are strongly calcareous and moderately saline. The area is imperfectly drained and has poorly defined drainage ways and wetlands. The James River drains the area to the south. Approximately, 58% of the land in MLRA 55C is used for cropland, 35% for range/pasture land, and 7% is urban, water, and other uses (USDA-NRCS, 2006).

Climate

The area receives about 21.5 inches of precipitation annually with 15.8 inches or 73% falling during the growing season (April-September). Most of the growing season precipitation is associated with high intensity thunder storms. During the winter the area receives about 34 inches of snow (Driessen, 1980). The precipitation levels have resulted in the leaching of carbonates to a depth of 20 inches in well drained soils. The average annual air temperature is 46°F. The average frost-free period (28°F basis with 50% probability) is April 28 to October 9 or 164-day growing season. The average number of growing degree days (40°F basis) during the period of May through September is 4100 (Driessen, 1980).

Soils

The dominant soils in the plots are the Carthage, Hand, Ethan, Davison, and Clarno (Soil Survey Staff, 2011). Associated adjacent soils are Tetonka. The soils in the research plots have limited or reduced productive capability due to low water holding capacity and sandy textures in the top 10 to 24 inches or high lime and soil pH values at or near the soil surface (see Tables 2a, 2b, and 2c for additional soils information). As a result, the crop productivity index values (a relative ranking from 0 to 100 of soils based on potential for intensive crop production) for the CcB (Carthage-Hand), HbB (Hand-Ethan), TcA (Tetonka-Davison-Clarno) are 68, 74, and 70, respectively, when compared to the best soils in Sanborn County. The crop productivity ratings assume: a) adequate management, b) natural weather conditions (no irrigation), c) artificial drainage where needed, d) no frequent flooding in lower lying soils, and e) no land leveling or terracing. The average range production for CcB, HbB, and TcA are 3090, 2780, and 3690 lbs/a respectively with the highest range production values in Sanborn County at more than 6290 lbs/a (Soil Survey Staff, 2011). The dominant Great Groups in this site are Haplustolls (Carthage, Clarno and Hand) and Calciustolls (Ethan) with a mesic temperature regime, an ustic moisture regime, a mixed mineraology, coarse-loamy or fine-loamy particle size classes, and a superactive cation exchange activity class. The Davison (Calcicquolls) are non-hydric soils formed in loamy till on rims of potholes. The Tetonka (Argialbolls) are hydric soils formed in local alluvium in depressions/swales and have aquic moisture regimes. The soils found at the site are mapped in more than 2.4 million acres in South Dakota (USDA-NRCS, 2011).

References

1. Driessen, J.L. 1980. Soil Survey of Sanborn County, South Dakota. USDA-SCS. US Government Printing Office. Washington, DC.
2. Soil Survey Staff, Natural Resources Conservation Service, United States Department of Agriculture. Web Soil Survey. Available online at <http://websoilsurvey.nrcs.usda.gov/>. Accessed Dec 21, 2011.
3. USDA-NRCS. 2006. Land Resource regions and Major Land Resource Areas of the United States, the Caribbean, and the Pacific Rim. US Department of Agriculture Handbook 296.
4. USDA-NRCS. 2011. Soil Extent Mapping Tool. USDA-NRCS. Available online at <http://www.cei.psu.edu/soiltool/semtool.html>? Accessed Dec 21. 2011.

Table 2a. Soil and Landform Information for Woonsocket Site, Sanborn County, SD Site (98.288588° W, 43.922722° N; NW ¼, Sec 9, T105N, R62W of 5 th Principle Meridian).									
Map Unit Symbol	Map Unit Name	Pct Slope	Land- form	Landform Position	Parent Material	Drainage Class	Depth Range to High Water Table (in)	Flooding Frequency	Ponding Frequency
CcB	Carthage-Hand fine-sandy loams	2-6	Swales/ Plains	Footslope/ Backslope	Loamy eolian deposits over loamy till/ Loamy drift	Moderately well drained/ Well drained	36 to 48/ more than 80	None	None
HbB	Hand-Ethan loams	2-6	Plains	Backslope/ Shoulder	Loamy drift/ Loamy till	Well drained	More than 80	None	None
TcA	Tetonka-Davison-Clarno complex	0-1/ 0-2/ 0-2	Potholes (closed depressions) / Rims of Potholes/ Plains	Toeslope/ Footslope/ Backslope	Clayey alluvium/ Loamy till/ Loamy till	Poorly drained/ moderately well drained/ well drained	0/ 18 to 48/ more than 80	None	Frequent/ None/ None

Table 2b. Soil and Landform Information for Woonsocket Site, Sanborn County, SD Site (98.288588° W, 43.922722° N; NW ¼, Sec 9, T105N, R62W of 5 th Principle Meridian).									
Map Unit Symbol	Map Unit Name	Available Soil Water Holding Capacity (in/60 in)	Surface Available Water holding Capacity (in/in)	Surface Saturated Hydraulic Conductivity (micro m/sec)	Land Capability Classification	Ecological Site	Hydric Designation for Named Soil*	Soil Classification	Crop Prod Index**
CcB	Carthage-Hand fine-sandy loams	9.4 / 10.5	0.11-0.17/ 0.14-0.17	14-42	3e	Sandy (R055CY009SD)/ Loamy (R055CY010SD)	No*** [has 5% Tetonka, Yes (2B3, 3)]	Coarse-loamy, mixed mesic, superactive Pachic Haplustolls/ Fine-loamy, mixed, mesic, superactive Typic Haplustolls	68
HbB	Hand-Ethan loams	10.7 / 10.9	0.18-0.22	4-14	2e/3e	Loamy (R055CY010SD)/ Thin Upland (R055CY012SD)	No*** [has 6% Tetonka, Yes (2B3, 3)]	Fine-loamy, mixed, mesic, superactive Typic Haplustolls/ Fine-loamy, mixed, mesic, superactive Typic Calcistolls	74
TcA	Tetonka-Davison-Clarno complex	10.2 / 10.2 / 10.8	0.19-0.22/ 0.18-0.20/ 0.17-0.19	4-14	4w/2e/2c	Wet Meadow (R055CY004SD)/ Limy Subirrigated (R055CY006SD)/ Loamy (R055CY010SD)	Yes (2B3, 3)/ No/ No	Fine, smectitic, mesic Argiaquic Argialbolls/ Fine-loamy, mixed, mesic, superactive Aeris Calciaquolls/ Fine-loamy, mixed, mesic, superactive Typic Haplustolls	70

* - Based on the criteria for hydric soil identification (<http://soils.usda.gov/use/hydric/criteria.html>, verified Dec 19, 2011).

** - Crop Productivity Index – top crop producing soil in Sanborn County is rated at 100.

Table 2c. Soil and Landform Information for Woonsocket Site, Sanborn County, SD Site (98.288588° W, 43.922722° N; NW ¼, Sec 9, T105N, R62W of 5 th Principle Meridian).												
Map Unit Symbol	Map Unit Name	Hydro-logic Group	Erosion Factor Kf	Erosion T Factor	Surface % sand	Surface % silt	Surface % clay	Surface Cation Exchange Capacity (meq/100g)	Surface Soil Reaction (pH)	Surface Salinity (mmhos/cm)	Surface Sodium Adsorption Ratio	Surface Calcium Carbonate (pct)
CcB	Carthage-Hand fine-sandy loams	B	0.20	5	63.1/ 65.4	19.4/ 19.6	17.5/ 15.0	9-17/ 8- 15	6.1-7.3/ 5.6-7.3	0-2*	0	0
HbB	Hand-Ethan loams	B	0.28	5	39.2	37.3	23.5	13-22/ 12-20	5.6-7.8/ 6.6-8.4	0-2*	0	0/ 5-15**
TcA	Tetonka-Davison-Clarno complex	C or D/ B/ B	0.37/ 0.28/ 0.24	5	24.5/ 41.1/ 39.2	52.0/ 36.9/ 37.3	23.5/ 22.0/ 23.5	17-30/ 13-21/ 16.22	5.6-7.3/ 6.6-8.4/ 6.1-7.3	0-2*	0	0/ 5- 15**/ 0

* All soils have moderate salt levels (2 to 8 mmhos/cm) in the lower (>30 inches) horizons which usually are till. No soils have any sodium problems.

** Ethan and Davison soils have high calcium carbonate levels(15 to 35%) within 9 inches of the soil surface while all other soils have moderate calcium carbonate levels (5 to 20%) in the till parent materials within 15 to 50 inches of the soil surface.

FLANDREAU SITE

Physiography

The soils at the Flandreau Site (96° 36' 37.77" W, 44° 4' 47.73" N; NE1/4, Section 17, T107N, R48W of 5th principle meridian, Moody County, SD) are found in MLRA 102B. MLRA 102B covers about 1.4 million acres in South Dakota and is located in the Western Lake Section of the Central Lowland Province of the Interior Plains (USDA-NRCS, 2006). The study site area is characterized by glaciated, nearly level to sloping plains. The till and drift are strongly calcareous and moderately saline. The Big Sioux River drains the area to the south and the river is less than one-half mile away from the site. Approximately, 71% of the land in MLRA 102B is used for cropland, 17% for range/pasture land, and 12% is urban, water, forest, and other uses (USDA-NRCS, 2006).

Climate

The area receives about 22.0 inches of precipitation annually with 17.0 inches or 77% falling during the growing season (April-September). Most of the growing season precipitation is associated with high intensity thunder storms. During the winter the area receives about 30 inches of snow (Kunze, 1989). The precipitation levels have resulted in the leaching of carbonates to a depth of 15 to 40 inches in well drained soils. The average annual air temperature is 44°F. The average frost-free period (28°F basis with 50% probability) is May 3 to October 7 or 157-day growing season. The average number of growing degree days (50°F basis) during the period of May through September is 2370 (Kunze, 1980).

Soils

The dominant soils in the plots are the Kranzburg, Lamo, and Graceville (Soil Survey Staff, 2011). Associated adjacent soils are Houdek and Shindler. The Kranzburg and Graceville soils have good productive capability while the Lamo soils do not because of wetness and flooding. See Tables 3a, 3b, and 3c for additional soils information. As a result, the crop productivity index values (a relative ranking from 0 to 100 of soils based on potential for intensive crop production) for the KaB (Kranzburg), Ga (Graceville), and Lb (Lamo) are 87, 85, and 34, respectively, when compared to the best soils in Moody County. The crop productivity ratings assume: a) adequate management, b) natural weather conditions (no irrigation), c) artificial drainage where needed, d) no frequent flooding in lower lying soils, and e) no land leveling or terracing. The average range production for KaB, Ga, and Lb are 3630, 3700, and 5560 lbs/a respectively with the highest range production values in Moody County at more than 6890 lbs/a (Soil Survey Staff, 2011).

The dominant Great Groups in this site are Hapludolls (Kranzburg), Endoaquolls (Lamo), and Haplustolls (Graceville) with a frigid or mesic temperature regimes, a udic or ustic moisture regime, a mixed mineralogy, fine-silty particle size classes, and a superactive cation exchange activity class. Adjacent soils include the Houdek (Argiustolls) and the Shindler (Haplustolls). The Lamo soils are hydric soils formed in silty alluvium with aquic moisture regimes. The soils found at the site are mapped in more than 1.2 million acres in South Dakota, Minnesota, Nebraska, North Dakota and Iowa (USDA-NRCS, 2011).

References

1. Kunze, B.O. 1989. Soil Survey of Moody County, South Dakota. USDA-SCS. US Government Printing Office. Washington, DC.
2. Soil Survey Staff, Natural Resources Conservation Service, United States Department of Agriculture. Web Soil Survey. Available online at <http://websoilsurvey.nrcs.usda.gov/>. Accessed Dec 21, 2011.
3. USDA-NRCS. 2006. Land Resource regions and Major Land Resource Areas of the United States, the Caribbean, and the Pacific Rim. US Department of Agriculture Handbook 296.
4. USDA-NRCS. 2011. Soil Extent Mapping Tool. USDA-NRCS. Available online at <http://www.cei.psu.edu/soiltool/semtool.html>? Accessed Dec 21. 2011.

Table 3a. Soil and Landform Information for Flandreau Site, Moody County, SD Site (96° 36' 37.77" W, 44° 4' 47.73" N; NE1/4, Section 17, T107N, R48W of 5 th principle meridian).									
Map Unit Symbol	Map Unit Name	Pct Slope	Land-form	Landform Position	Parent Material	Drainage Class	Depth Range to High Water Table (in)	Flooding Frequency	Ponding Frequency
Ga	Graceville silty clay loam	0-2	Swales on glacial outwash terraces	Footslope	Loess over glacial outwash	Well drained	More than 80	None	None
HsC	Houdek-Shindler clay loams	5-9	Plains	Backslope/ Shoulder	Loamy till	Well drained	More than 80	None	None
HsD	Houdek-Shindler clay loams	6-25	Plains	Backslope/ Shoulder	Loamy till	Well drained	More than 80	None	None
KaB	Kranzburg silty clay loam	2-6	Plains	Backslope	Loess over loamy till	Well drained	More than 80	None	None
Lb	Lamo silty clay loam, frequently flooded	0-1	Flood plains	Toeslope	Silty alluvium	Somewhat poorly drained	0 to 36	Frequent	None

Table 3b. Soil and Landform Information for Flandreau Site, Moody County, SD Site (96° 36' 37.77" W, 44° 4' 47.73" N; NE1/4, Section 17, T107N, R48W of 5 th principle meridian).									
Map Unit Symbol	Map Unit Name	Available Soil Water Holding Capacity (in/60 in)	Surface Available Water holding Capacity (in/in)	Surface Saturated Hydraulic Conductivity (micro m/sec)	Land Capability Classification	Ecological Site	Hydric Designation for Named Soil*	Soil Classification	Crop Prod Index**
Ga	Graceville silty clay loam	10.3	0.19 – 0.22	4 – 14	1	Loamy (R102BY010SD)	No	Fine-silty, mixed, superactive, mesic Pachic Haplustolls	85
HsC	Houdek-Shindler clay loams	11.4/10.9	0.16 – 0.22/ 0.17 – 0.22	4 – 14	3e/ 4e	Loamy (R102BY010SD)	No [Has 4% Lamo, Yes (2A)]	Fine-loamy, mixed, superactive, mesic Typic Argiustolls/ Fine-loamy, mixed, superactive, mesic Udorthentic Haplustolls	63
HsD	Houdek-Shindler clay loams	11.4/10.9	0.16 – 0.22/ 0.27 – 0.22	4 – 14	4e/ 6e	Loamy (R102BY010SD)	No	Fine-loamy, mixed, superactive, mesic Typic Argiustolls/ Fine-loamy, mixed, superactive, mesic Udorthentic Haplustolls	41
KaB	Kranzburg silty clay loam	11.6	0.19 – 0.22	4 – 14	2e	Loamy (R102AY010SD)	No	Fine-silty, mixed, superactive, frigid Calcic Haplustolls	87
Lb	Lamo silty clay loam, frequently flooded	12.1	0.19 – 0.23	1 – 14	6w	Subirrigated (R102BY003SD)	Yes (2A)	Fine-silty, mixed, superactive, calcareous, mesic Cumulic Endoaquolls	34

* - Based on the criteria for hydric soil identification (<http://soils.usda.gov/use/hydric/criteria.html>, verified Dec 19, 2011).

** - Crop Productivity Index – top crop producing soil in Moody County is rated at 100.

Table 3c. Soil and Landform Information for Flandreau Site, Moody County, SD Site (96° 36' 37.77" W, 44° 4' 47.73" N; NE1/4, Section 17, T107N, R48W of 5 th principle meridian).												
Map Unit Symbol	Map Unit Name	Hydro-logic Group	Erosion Factor Kf	Erosion T Factor	Surface % sand	Surface % silt	Surface % clay	Surface Cation Exchange Capacity (meq/100g)	Surface Soil Reaction (pH)	Surface Salinity (mmhos/cm)	Surface Sodium Adsorption Ratio	Surface Calcium Carbonate (pct)
Ga	Graceville silty clay loam	B	0.28	4	6.9	62.6	30.5	20 – 34	5.6 – 7.3	0 – 2.0	0	0
HsC	Houdek-Shindler clay loams	B/C	0.24/ 0.28	5	34.2/ 33.2	37.3/ 36.3	28.5/ 30.5	15 – 25/ 14 – 24	6.1 – 7.3/ 6.1 – 8.4**	0 – 2.0*/ 0 – 3.0	0	0/ 0***
HsD	Houdek-Shindler clay loams	B/C	0.24/ 0.28	5	34.2/ 33.2	37.3/ 36.3	28.5/ 30.5	15 – 25/ 14 – 24	6.1 – 7.3/ 6.1 – 8.4**	0 – 2.0*/ 0 – 3.0	0	0/ 0***
KaB	Kranzburg silty clay loam	B	0.28	5	6.9	62.6	30.5	20 – 34	5.6 – 7.3	0 – 2.0	0	0
Lb	Lamo silty clay loam, frequently flooded	C	0.32	5	7.0	65.0	28.0	18 – 28	7.4 – 8.4**	0	0	1 – 5***

*- Only the Houdek soils have moderate salt levels (up to 8 mmhos/cm) and significant gypsum levels (1-5%) in the lower (>43 inches) horizons which usually are till. No soils have any sodium problems.

** - Lamo and Shindler soils have moderately high soil pH levels (6.6 to 8.4) at the soil surface.

*** - Houdek, Shindler, and Lamo soils have high calcium carbonate levels (up to 20%) within 16 inches of the soil surface.

CIG SITE at Colman, SD

Physiography

The soils at the CIG Site near Colman, SD (96° 50' 37.878" W, 44° 1' 23.139" N; SW1/4, Section 33, T107N, R50W of 5th principle meridian, Moody County, SD) are found in MLRA 102C. MLRA 102C covers about 7.3 million acres in Nebraska, South Dakota, Iowa, and Minnesota and is located in the Dissected Till Plains Section of the Central Lowland Province of the Interior Plains (USDA-NRCS, 2006). The study site area is characterized by glaciated, nearly level to sloping plains and many potholes. The till and drift are strongly calcareous and moderately saline. Where drainage is established the Big Sioux River drains the area to the south. Approximately, 74% of the land in MLRA 102C is used for cropland, 16% for range/pasture land, and 10% is urban, water, forest, and other uses (USDA-NRCS, 2006).

Climate

The area receives about 22.0 inches of precipitation annually with 17.0 inches or 77% falling during the growing season (April-September). Most of the growing season precipitation is associated with high intensity thunder storms. During the winter the area receives about 30 inches of snow (Kunze, 1989). The precipitation levels have resulted in the leaching of carbonates to a depth of 15 to 40 inches in well drained soils. The average annual air temperature is 44°F. The average frost-free period (28°F basis with 50% probability) is May 3 to October 7 or 157-day growing season. The average number of growing degree days (50°F basis) during the period of May through September is 2370 (Kunze, 1980).

Soils

The dominant soils in the plots are the Dempster, Talmo, Worthing, Wentworth, and Egan (Soil Survey Staff, 2011). The associated adjacent soil is Baltic. The Wentworth and Egan soils have good productive capability while the Worthing soils do not because of wetness and flooding. The Dempster and Talmo soils have only fair productivity due to shallow/very shallow sandy profiles. See Tables 4a, 4b, and 4c for additional soils information. As a result, the crop productivity index values (a relative ranking from 0 to 100 of soils based on potential for intensive crop production) for the WeB (Wentworth-Egan), DnB (Dempster-Talmo), and Wo (Worthing) are 86, 49, and 32, respectively when compared to the best soils in Moody County. The crop productivity ratings assume: a) adequate management, b) natural weather conditions (no irrigation), c) artificial drainage where needed, d) no frequent flooding in lower lying soils, and e) no land leveling or terracing. The average range production for WeB, DnB, and Wo are 3850, 3300, and 6890 lbs/a respectively with the highest range production values in Moody County at more than 6890 lbs/a (Soil Survey Staff, 2011).

The dominant Great Groups in this site are Haplustolls (Dempster, Egan, Wentworth, and Talmo) and Argiaquolls (Worthing) with a mesic temperature regimes, an ustic or aquic moisture regime, a mixed or smectitic mineralogy, fine-silty or fine particle size classes, and mostly superactive cation exchange activity classes. Adjacent soils include the Baltic (Endoaquolls). The Worthing and Baltic soils are hydric soils formed in clayey alluvium. The soils found at the site are mapped in 1.0 million acres in South Dakota, Minnesota, Nebraska, and Iowa (USDA-NRCS, 2011).

References

1. Kunze, B.O. 1989. Soil Survey of Moody County, South Dakota. USDA-SCS. US Government Printing Office. Washington, DC.
2. Soil Survey Staff, Natural Resources Conservation Service, United States Department of Agriculture. Web Soil Survey. Available online at <http://websoilsurvey.nrcs.usda.gov/>. Accessed Dec 21, 2011.
3. USDA-NRCS. 2006. Land Resource regions and Major Land Resource Areas of the United States, the Caribbean, and the Pacific Rim. US Department of Agriculture Handbook 296.
4. USDA-NRCS. 2011. Soil Extent Mapping Tool. USDA-NRCS. Available online at <http://www.cei.psu.edu/soiltool/semtool.html>? Accessed Dec 21. 2011.

Table 4a. Soil and Landform Information for CIG Site near Colman, SD (96° 50' 37.878" W, 44° 1' 23.139" N; SW1/4, Section 33, T107N, R50W of 5 th principle meridian, Moody County, SD).									
Map Unit Symbol	Map Unit Name	Pct Slope	Land- form	Landform Position	Parent Material	Drainage Class	Depth Range to High Water Table (in)	Flooding Frequency	Ponding Frequency
Ba	Baltic silty clay loams undrained	0-1	Potholes (closed depressions)	Toeslope	Clayey alluvium	Poorly drained	0	None	Frequent
DnB	Dempster-Talmo complex	2-6/ 2-9	Glacial outwash terraces/ glacial outwash	Backslope/ shoulder	Loess over glacial outwash/ glacial outwash	Well drained/ excessively drained	More than 80	None	None
WeB	Wentworth-Egan silty clay loams	2-6	Plains	Backslope	Silty drift over loamy till	Well drained	More than 80	None	None
Wo	Worthing silty clay loams	0-1	Potholes (closed depressions)	Toeslope	Clayey alluvium	Very poorly drained	0	None	Frequent

Table 4b. Soil and Landform Information for CIG Site near Colman, SD (96° 50' 37.878" W, 44° 1' 23.139" N; SW1/4, Section 33, T107N, R50W of 5 th principle meridian, Moody County, SD).									
Map Unit Symbol	Map Unit Name	Available Soil Water Holding Capacity (in/60 in)	Surface Available Water holding Capacity (in/in)	Surface Saturated Hydraulic Conductivity (micro m/sec)	Land Capability Classification	Ecological Site	Hydric Designation for Named Soil*	Soil Classification	Crop Prod Index**
Ba	Baltic silty clay loams undrained	9.0	0.16-0.20	1.4-4.0	5w	Shallow Marsh (R102BY001SD)	Yes (2B3, 3)	Fine, smectitic, calcareous, mesic Cumulic Vertic Endoaquolls	34
DnB	Dempster-Talmo complex	8.0/1.5	0.19-0.22/0.18-0.20***	4.0-14.0	2e/6s	Loamy (R102BY010SD)/ Very Shallow (R102BY016SD)	No	Fine-silty over sandy or sandy-skeletal, mixed, superactive, mesic Udic Haplustolls/ Sandy-skeletal, mixed, mesic Udorthentic Haplustolls	49
WeB	Wentworth-Egan silty clay loams	11.7/11.5	0.19-0.22	4.0-14.0	2e	Loamy (R102BY010SD)	No	Fine-silty, mixed, superactive, mesic Udic Haplustolls	86
Wo	Worthing silty clay loams	9.8	0.19-0.22	1.4-4.0	5w	Shallow Marsh (R102BY001SD)	Yes (2B3, 3)	Fine, smectitic, calcareous, mesic Vertic Argiaquolls	32

* - Based on the criteria for hydric soil identification (<http://soils.usda.gov/use/hydric/criteria.html>, verified Dec 19, 2011).

** - Crop Productivity Index – top crop producing soil in Moody County is rated at 100.

*** - Plant available water holding capacity is very low (0.03-0.06 in/in) for Dempster soil at the 36 inch depth and at 8 inches for Talmo.

Table 4c. Soil and Landform Information for CIG Site near Colman, SD (96° 50' 37.878" W, 44° 1' 23.139" N; SW1/4, Section 33, T107N, R50W of 5th principle meridian, Moody County, SD).												
Map Unit Symbol	Map Unit Name	Hydro-logic Group	Erosion Factor Kf	Erosion T Factor	Surface % sand	Surface % silt	Surface % clay	Surface Cation Exchange Capacity (meq/100g)	Surface Soil Reaction (pH)	Surface Salinity (mmhos/cm)	Surface Sodium Adsorption Ratio	Surface Calcium Carbonate (pct)
Ba	Baltic silty clay loams undrained	D	0.37	5	18.7	47.8	33.5	21-36	7.4-8.4**	0-2.0*	0*	1-10**
DnB	Dempster-Talmo complex	B/A	0.28	4/2	9.5/41.4	67.5/37.1	23.0/21.5	15-25/10-25***	5.6-7.3/6.6-7.8	0-2.0	0	0/0-5
WeB	Wentworth-Egan silty clay loams	B	0.28	5	6.9	62.1	31.0	18-31	5.6-7.3/6.1-7.3	0-2.0	0	0
Wo	Worthing silty clay loams	D	0.37	5	7.6	54.9	37.5	21-33	5.6-7.3	0-2.0	0	0

*- No soils had any sodium or soluble salt problems.

** - Baltic soils have moderately high soil pH levels (7.4 to 8.4) at the soil surface. Rest of soils had moderately high soil pH values and calcium carbonate levels (up to 20%) at depths >24 inches.

*** - Dempster soils have very low cation exchange capacity values (1-2 meq/100g) at 36 inch depth and Talmo have low cation exchange capacity values (<15 meq/100g) at 8 inch depth.